

LOC/DME I-IND <b>111.75</b> Chan <b>54</b> (Y)	APP CRS <b>050°</b>	Rwy Ldg <b>11200</b> TDZE <b>747</b> Apt Elev <b>796</b>
--	------------------------	--

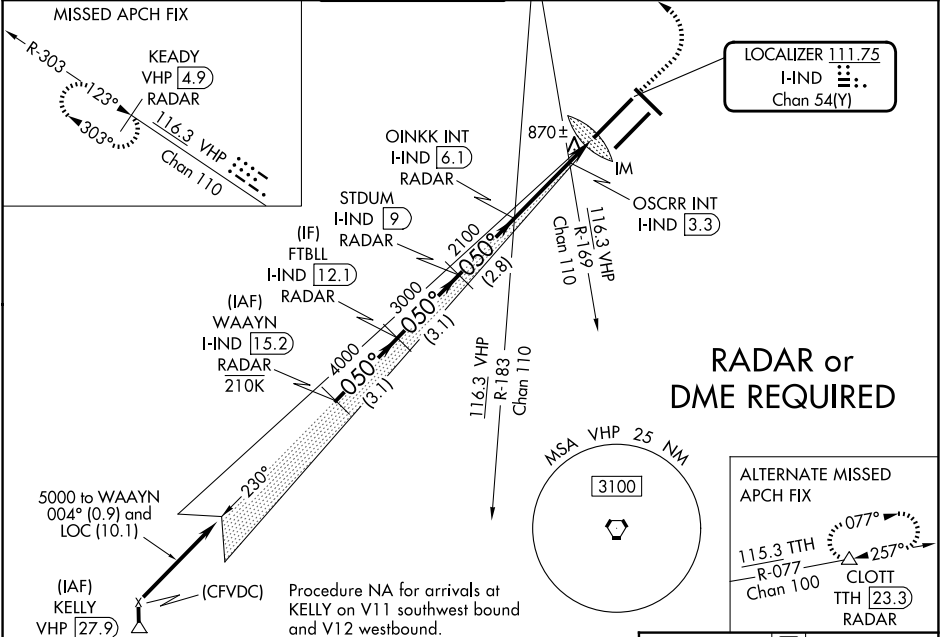
ILS or LOC RWY 5L

INDIANAPOLIS INTL (IND)

⚠ Simultaneous approach authorized. DME or RADAR required.  
For inop ALS, increase S-LOC 5L Cat C/D visibility to 1½ SM.  
OSCRR fix minimums: For inop ALS, increase S-LOC 5L Cat C/D visibility to RVR 5500.

ALS-F-2  
ⓘ  
MISSED APPROACH: Climb to 1700 then climbing left turn to 3000 direct VHP VORTAC then on VHP VORTAC R-303 to KEADY/VHP 4.9 DME/RADAR and hold.

D-ATIS <b>134.25</b>	INDIANAPOLIS APP CON <b>128.175 317.8</b>	INDY TOWER <b>120.9 251.1</b>	GND CON <b>121.9</b>	CLNC DEL <b>128.75 251.1</b>	CPDLC
-------------------------	--	----------------------------------	-------------------------	---------------------------------	-------



VGSI and ILS glidepath not coincident (VGSI Angle 3.00/TCH 74).					1700 ↑	3000 ↷	VHP R-303	VHP R-303	KEADY VHP 4.9 RADAR
WAAYN I-IND 15.2 RADAR	FTBLL I-IND 12.1 RADAR	STDUM I-IND 9 RADAR	OINKK INT I-IND 6.1 RADAR	OSCRR INT I-IND 3.3 RADAR	*LOC only				
5000	4000	3000	2100	2100	*1220	I-IND 2			
GS 3.00° TCH 53	3.1 NM				3.1 NM	2.8 NM	2.8 NM	1.1 NM	0.2
CATEGORY	A		B		C		D		
S-ILS 5L	947/18				200 (200-½)				
S-LOC 5L	1220/24 473 (500-½)				1220/50 473 (500-1)				
CIRCLING	1420-1 624 (700-1)				1420-1¾ 624 (700-1¾) 1560-2½ 764 (800-2½)				
OSCRR FIX MINIMUMS (DUAL VOR RECEIVERS or DME REQUIRED)									
S-LOC 5L	1120/24 373 (400-½)				1120/35 373 (400-¾)				
CIRCLING	1420-1 624 (700-1)				1420-1¾ 624 (700-1¾) 1560-2½ 764 (800-2½)				

