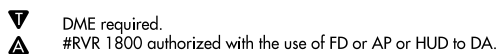


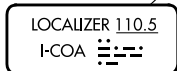
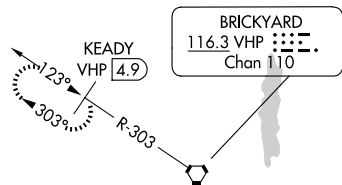
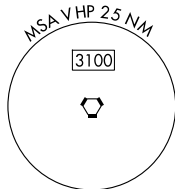
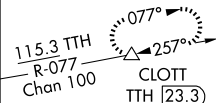
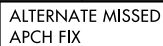
LOC I-COA <u>110.5</u>	APP CRS 320°	Rwy Ldg 7278 TDZE 793 Apt Elev 796
----------------------------------	------------------------	---

ILS or LOC RWY 32
INDIANAPOLIS INTL (IND)

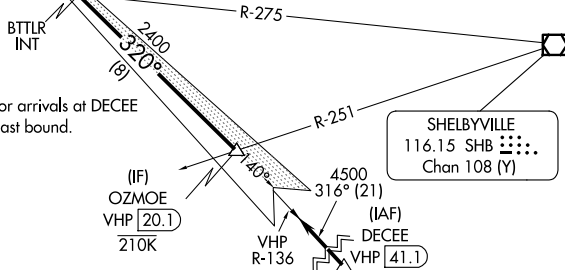


MISSED APPROACH: Climb to 1500 then climbing right turn to 3000 direct VHP VORTAC and on VHP R-303 to KEADY/VHP 4.9 DME and hold.

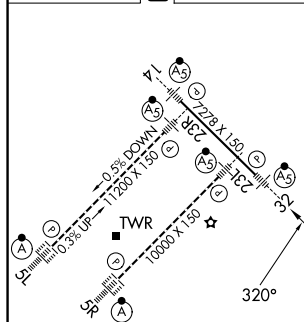
D-ATIS 134.25	INDIANAPOLIS APP CON 128.175 317.8	INDY TOWER 120.9 251.1	GND CON 121.9	CLNC DEL 128.75 251.1	CPDLC
------------------	---------------------------------------	---------------------------	------------------	--------------------------	-------



Procedure NA for arrivals at DECEE
on V128 southeast bound.



ELEV 796	D	TDZE 793
----------	----------	----------



HIRL all Rwy's
TDZ/CL Rwy's 5L and 5R

FAF to MAP 4.9 NM

Knots	60	90	120	150	180
Min:Sec	4:54	3:16	2:27	1:58	1:38

INDIANAPOLIS, INDIANA

Amdt 21A 22JUN17

[illegible]

	4.9 NM		8 NM	
CATEGORY	A	B	C	D
S-ILS 32	# 993/24 200 (200-½)			
S-LOC 32	1280/24 487 (500-½)		1280/50 487 (500-1)	
CIRCLING	1420-1 624 (700-1)		1420-1¾ 624 (700-1¾)	1560-2½ 764 (800-2½)

INDIANAPOLIS INTL (IND)

ILS or LOC RWY 32

39°43'N-86°18'W

EC-2, 07 AUG 2025 to 04 SEP 2025