

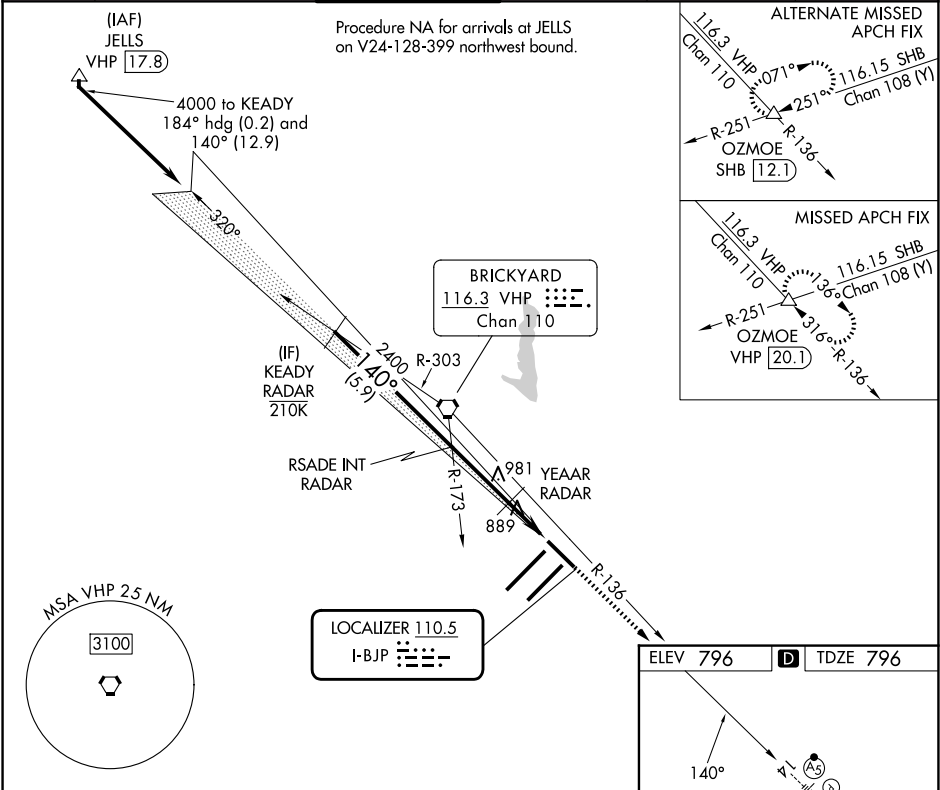
LOC I-BJP <b>110.5</b>	APP CRS <b>140°</b>	Rwy Ldg <b>7278</b> TDZE <b>796</b> Apt Elev <b>796</b>
---------------------------	------------------------	--

ILS or LOC RWY 14

INDIANAPOLIS INTL (IND)

RADAR required. ▼ For inop ALS, increase S-LOC 14 Cat C and D visibility to RVR 5500. ▲ *RVR 1800 authorized with use of FD or AP or HUD to DA.			MALSR AS	MISSED APPROACH: Climb to 3000 on VHP R-136 to OZMOE INT/ VHP 20.1 DME and hold.
---	--	--	-------------	--

D-ATIS <b>134.25</b>	INDIANAPOLIS APP CON <b>128.175 317.8</b>	INDY TOWER <b>120.9 251.1</b>	GND CON <b>121.9</b>	CLNC DEL <b>128.75 251.1</b>	CPDLC
-------------------------	--	----------------------------------	-------------------------	---------------------------------	-------



KEADY RADAR		VGSI and ILS glidepath not coincident (VGSI Angle 3.00/TCH 74).		3000	OZMOE
4000		RSAD E INT RADAR		VHP R-136	△
140°		YEAAR RADAR			
GS 3.00° TCH 55		2400		1320	
5.9 NM		2.9 NM		2 NM	
CATEGORY	A	B	C	D	
S-ILS 14 *	996/24 200 (200-½)				
S-LOC 14	1140/24	344 (400-½)	1140/30	344 (400-¾)	
CIRCLING	1420-1	624 (700-1)	1420-1¾ 624 (700-1¾)	1560-2½ 764 (800-2½)	

HIRL all Rwy's	
TDZ/CL Rwy's 5L and 5R	
FAF to MAP 4.9 NM	
Knots	60 90 120 150 180
Min:Sec	4:54 3:16 2:27 1:58 1:38