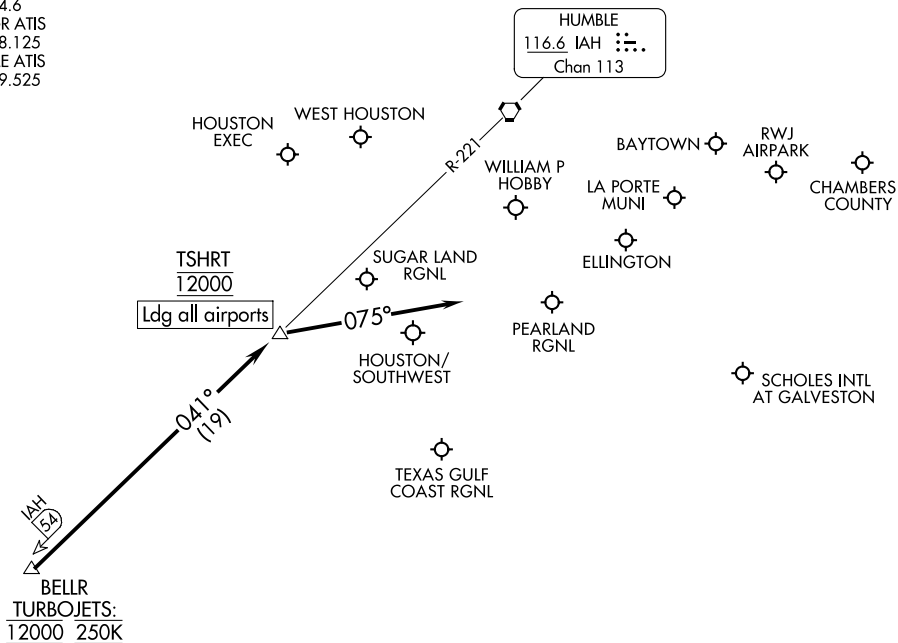


TSHRT TWO ARRIVAL

Arrival Routes

HOUSTON, TEXAS

HOUSTON APP CON
119.175 291.675
EFD ATIS
135.575 269.9
HOU D-ATIS
124.6
SGR ATIS
118.125
TME ATIS
119.525



NOTE: RADAR required.

NOTE: DME/DME/IRU or GPS equipped turbojet and turboprop aircraft landing HOU must file the BELLR (RNAV) STAR.

NOTE: DME required.

NOTE: Chart not to scale.

ARRIVAL ROUTE DESCRIPTION

... from over BELLR on IAH R-221 to cross TSHRT at 12000. From TSHRT fly heading 075° for vectors to final approach course.

TSHRT TWO ARRIVAL

Arrival Routes

HOUSTON, TEXAS

(BELLR.TSHRT2) 03NOV22

SC-5, 07 AUG 2025 to 04 SEP 2025

SC-5, 07 AUG 2025 to 04 SEP 2025