

WAAS
CH **65610**
W22A

APP CRS
221°

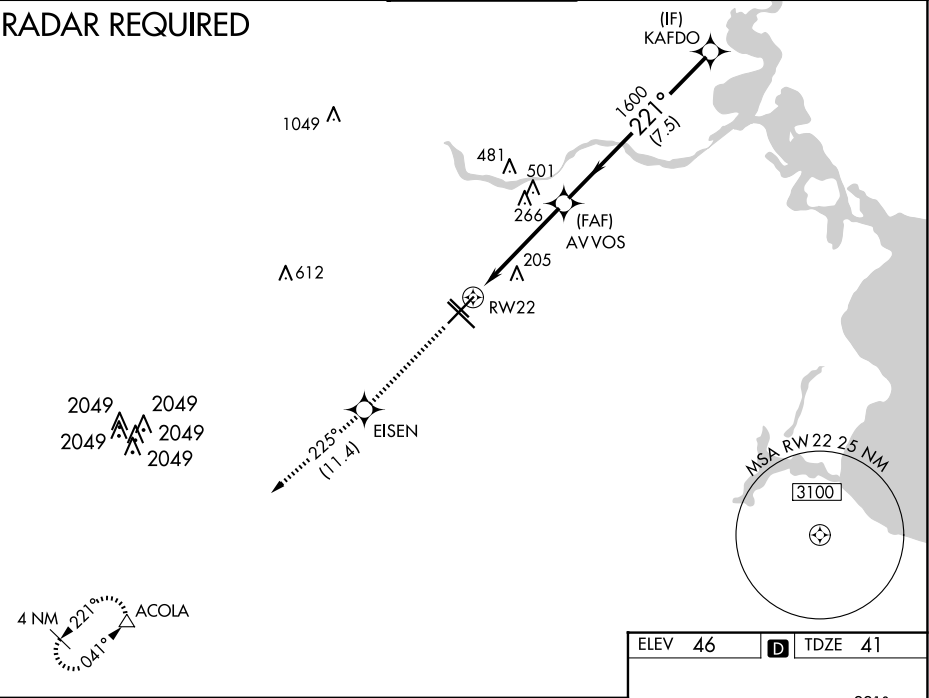
Rwy Idg **7602**
TDZE **41**
Apt Elev **46**

RNAV (GPS) RWY 22

WILLIAM P HOBBY (HOU)

RNP APCH		MALS	MISSED APPROACH: Climb to 3000 direct EISEN and on track 225° to ACOLA and hold.		
Inop table does not apply to LPV, LNAV/VNAV all Cats, and LNAV Cat C. For uncompensated Baro-VNAV systems, LNAV/VNAV NA below -15°C (5°F) or above 48°C (118°F).					
D-ATIS 124.6	HOUSTON APP CON 120.05 379.1 EAST 124.35 316.15 WEST	HOBBY TOWER 118.7 256.9	GND CON 121.9	CLNC DEL 125.45	CPDLC

RADAR REQUIRED



3000

↑

EISEN

✦

225°
tr

ACOLA

△

AVVOS

1600

KAFDO

2000

*LNAV only.

*1.5 NM to RW22

GP 3.00°
TCH 52

RW22

1.5 NM

3.2 NM

7.5 NM

221°

1600

CATEGORY	A	B	C	D	E
LPV DA	360-1		319 (400-1)		
LNAV/ VNAV DA	480-1½		439 (500-1½)		
LNAV MDA	580-¾	539 (600-¾)	580-1½ 539 (600-1½)	580-1¾ 539 (600-1¾)	580-2 539 (600-2)
CIRCLING	580-1	534 (600-1)	580-1½ 534 (600-1½)	740-2¼ 694 (700-2¼)	820-2¾ 774 (800-2¾)

