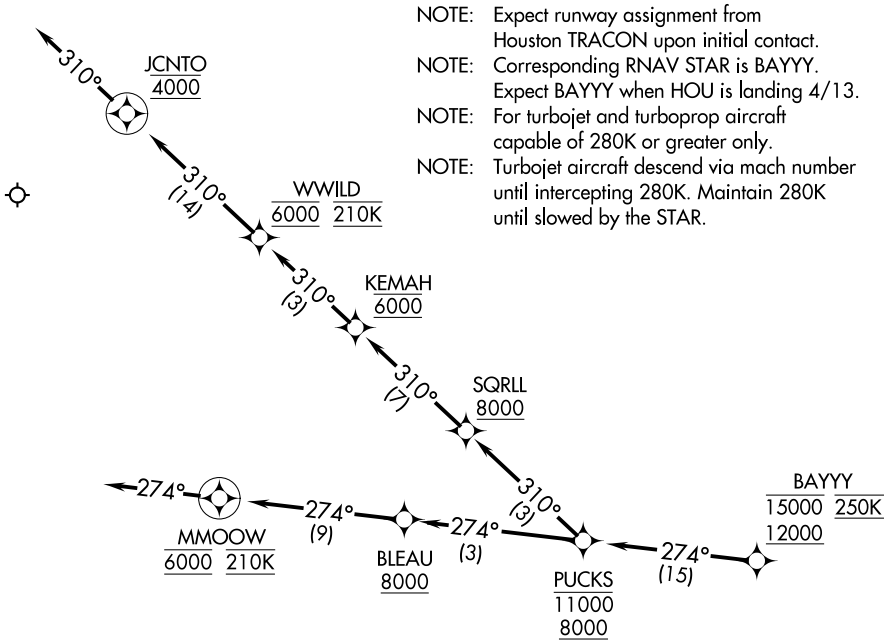


HOUSTON APP CON
119.625 226.675
D-ATIS
124.6

RNAV 1- DME/DME/IRU or GPS.
RADAR required.



NOTE: Chart not to scale.

ARRIVAL ROUTE DESCRIPTION

From BAYYY on track 274° to cross PUCKS between 8000 and 11000.

LANDING RUNWAY 22: From PUCKS on track 310° to cross SQRLL at or above 8000, then on track 310° to cross KEMAH at 6000, then on track 310° to cross WWILD at 6000 and at 210K, then on track 310° to cross JCNT0 at 4000, then on track 310°. Expect RADAR vectors to final approach course.

LANDING RUNWAYS 31L/R: From PUCKS on track 274° to cross BLEAU at or above 8000, then on track 274° to cross MMOOW at 6000 and at 210K, then on track 274°. Expect RADAR vectors to final approach course.