

LOC/DME I-HUB 109.9 Chan 36	APP CRS 041°	Rwy Idg TDZE 44 Apt Elev 46
---	------------------------	---

ILS RWY 4 (CAT II & III)

WILLIAM P HOBBY (HOU)

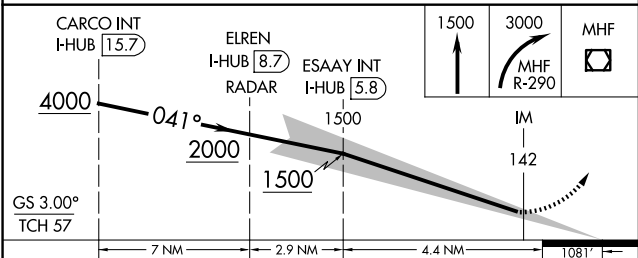
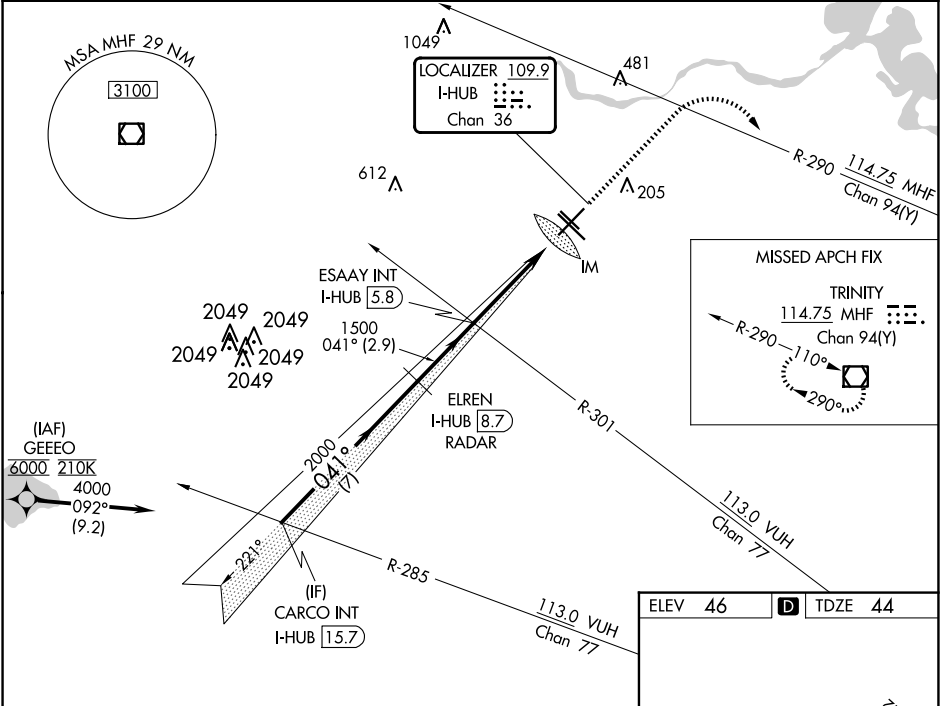
Aircraft not GPS equipped - RADAR required for procedure entry.
From GEEEO: RNAV 1- GPS required.

ALSF-2

MISSED APPROACH: Climb to 1500 then
climbing right turn to 3000 on MHF VOR/DME
R-290 to MHF VOR/DME and hold.

CAT II: RVR 1000 authorized with specific OPSPEC, MSPEC,
or LOA approval and use of autoland or HUD to touchdown.

D-ATIS 124.6	HOUSTON APP CON 120.05 379.1 EAST 124.35 316.15 WEST	HOBBY TOWER 118.7 256.9	GND CON 121.9	CLNC DEL 125.45	CPDLC
------------------------	--	-----------------------------------	-------------------------	---------------------------	-------



CATEGORY	A	B	C	D
S-ILS 4	CAT II	RA 100/12	100 DA 144	
S-ILS 4		CAT III	RVR 06	

CATEGORY II & III ILS - SPECIAL AIRCREW
& AIRCRAFT CERTIFICATION REQUIRED

REIL Rwy 31L
MIRL Rwy 13L-31R
HIRL Rwy 4-22 and 13R-31L
TDZ/CL Rwy 4, 13R and 31L

SC-5, 07 AUG 2025 to 04 SEP 2025

SC-5, 07 AUG 2025 to 04 SEP 2025