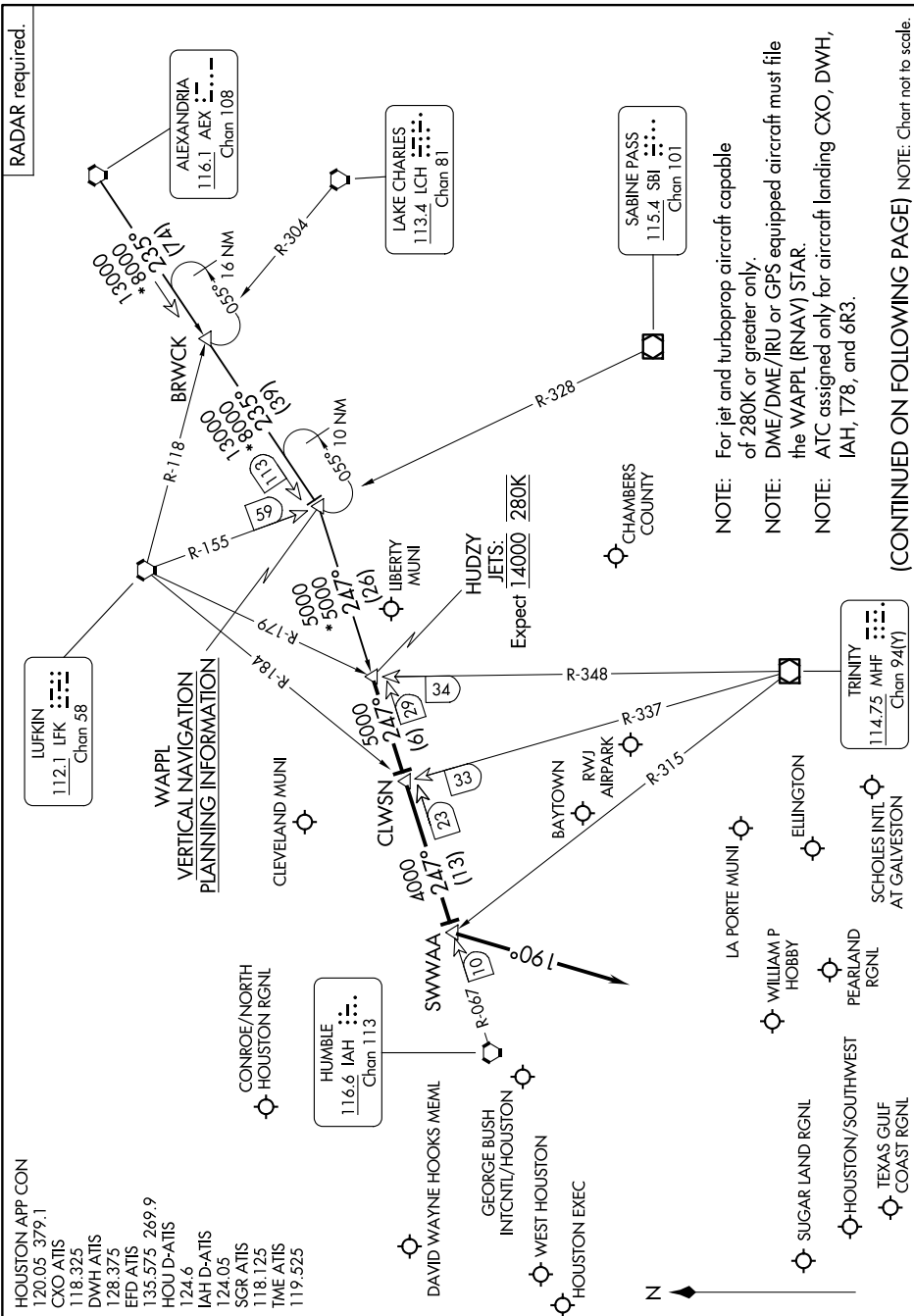


HOUSTON, TEXAS



**NOTE:** For jet and turboprop aircraft capable

of 280K or greater only.

**NOTE:** DME/DME/IRU or GPS equipped aircraft must file the WAPPL (RNAV) STAR.

NOTE: ATC assigned only for aircraft landing CXO, DWH, IAH, T78, and 6R3.

(CONTINUED ON FOLLOWING PAGE) NOTE: Chart not to scale.