

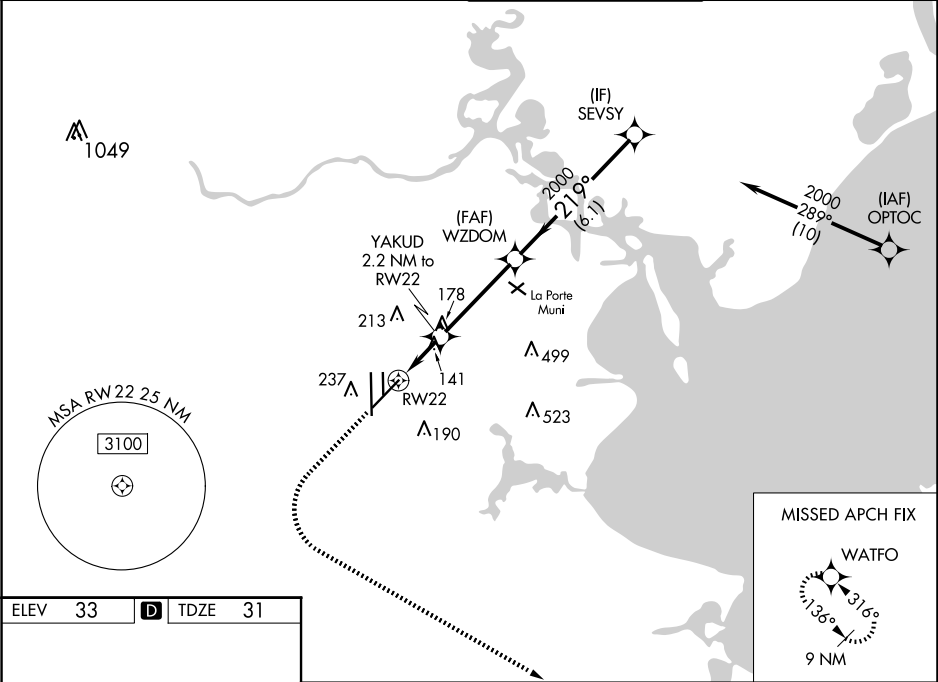
WAAS CH 61111 W22A	APP CRS 219°	Rwy Idg 8001 TDZE 31 Apt Elev 33
--	------------------------	---

RNAV (GPS) RWY 22

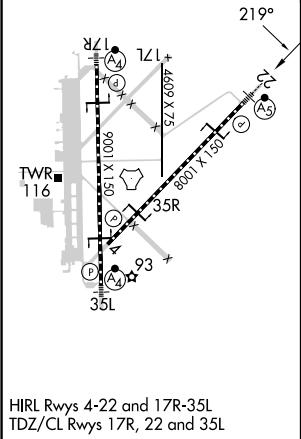
ELLINGTON (EFD)

RNP APCH.	MALSR	MISSED APPROACH: Climb to 500 then climbing left turn to 3100 direct WATFO and hold.
<div><div></div><div></div></div> <div>Circling NA west of Rwy 17R - 35L. For uncompensated Baro-VNAV systems, LNAV/VNAV NA below -15°C or above 54°C. For inop ALS, increase LPV Cat E visibility to RVR 4000, LNAV/VNAV all Cats visibility to RVR 4500, and LNAV Cats C/D/E visibility to RVR 5500.</div>	<div><div></div><div></div></div>	

ATIS 135.575 269.9	HOUSTON APP CON 134.45 284.0	ELLINGTON TOWER 126.05 253.5	GND CON 121.6 275.8
------------------------------	--	--	-------------------------------



ELEV 33	D	TDZE 31
---------	----------	---------



HIRL Rwy 4-22 and 17R-35L
TDZ/CL Rwy 17R, 22 and 35L

500	3100	WATFO	VGSi and RNAV glidepath not coincident (VGSi Angle 3.00/TCH 50).		
*LNAV only.			YAKUD 2.2 NM to RW22	WZDOM 2000	SEVSY 2000
1 NM to RW22			780	2000	GP 3.00° TCH 54
1 NM 1.2 NM 3.8 NM 6.1 NM					
CATEGORY	A	B	C	D	E
LPV	DA	231/18	200 (200-½)		
LNAV/VNAV	DA	341/24	310 (400-½)		
LNAV	MDA	400/24 369 (400-½)	400/35 369 (400-¾)		
<div></div> CIRCLING	500-1	467 (500-1)	580-1½ 547 (600-1½)	640-2 607 (700-2)	700-2¼ 667 (700-2¼)