

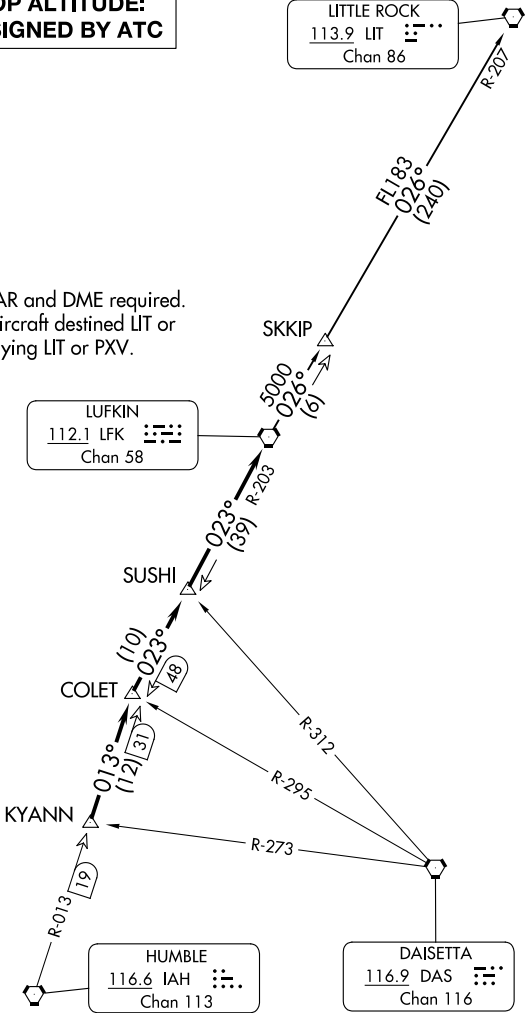
ATIS
135.575 269.9
GND CON
121.6 275.8
ELLINGTON TOWER
126.05 253.5
HOUSTON DEP CON
134.45 284.0

TOP ALTITUDE:
ASSIGNED BY ATC

LITTLE ROCK
113.9 LIT
Chan 86

NOTE: RADAR and DME required.
NOTE: For aircraft destined LIT or
overflying LIT or PXV.

LUFKIN
112.1 LFK
Chan 58



TAKEOFF MINIMUMS
Rwys 4, 17L/R, 35L/R: Standard.
Rwy 22: 200-1¼ or standard with minimum climb
of 214' per NM to 300 or alternatively with
standard takeoff minimums and a normal
200' per NM climb gradient, takeoff must
occur no later than 1400' prior to DER.