

LOC I-FNF <b>110.1</b>	APP CRS <b>219°</b>	Rwy Idg TDZE Apt Elev	<b>8001</b> <b>31</b> <b>33</b>
---------------------------	------------------------	-----------------------------	---------------------------------------

ILS Z or LOC Z RWY 22  
ELLINGTON (EFD)

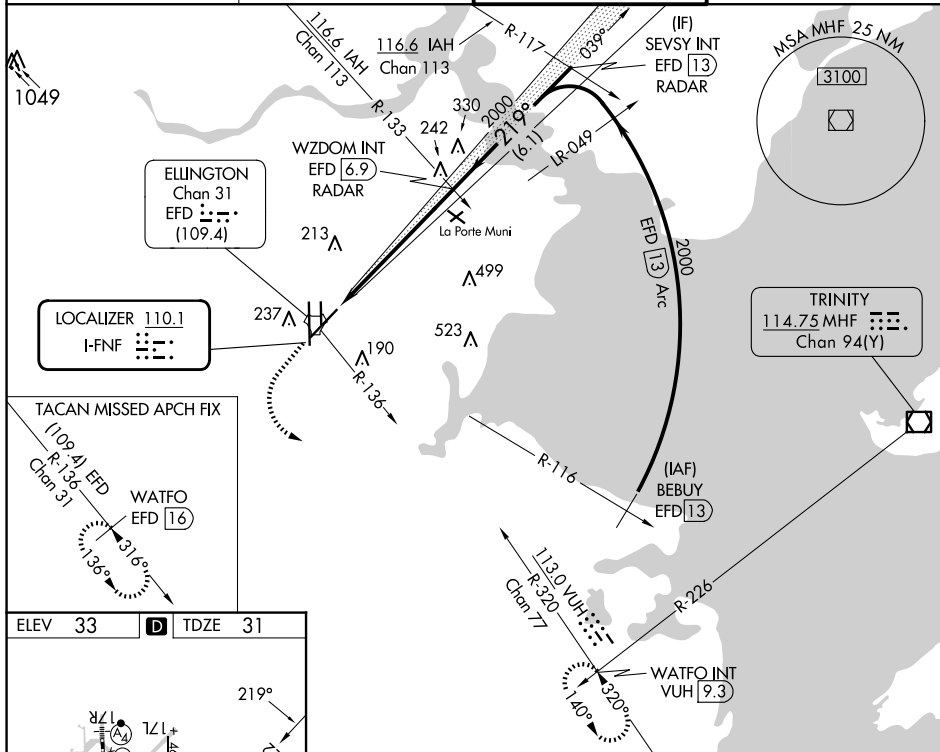
RADAR required for procedure entry.

**T** Circling NA west of Rwy 17R-35L. DME from EFD TACAN.  
**A** Simultaneous reception of I-FNF and EFD DME required.  
 For inop ALS, increase S-ILS 22 Cat E visibility to RVR  
 4000 and S-LOC 22 Cat E visibility to 1½ SM.

MALSR  
A5

**MISSED APPROACH:** Climb to 700 then climbing left turn to 3100 on VUH VOR/DME R-320 to WATFO INT/VUH 9.3 DME and hold. (TACAN aircraft climb to 700 then climbing left turn to 3100 on EFD TACAN R-136 to WATFO/EFD 16 DME and hold southeast. left turn. 316° inbound.)

<p>ATIS</p> <p><b>135.575 269.9</b></p>	<p>HOUSTON APP CON</p> <p><b>134.45 284.0</b></p>	<p>ELLINGTON TOWER</p> <p><b>126.05 253.5</b></p>	<p>GND CON</p> <p><b>121.6 275.8</b></p>
---	---	---	--



HIRL Rwy's 4-22 and 17R-35L  
 TDZ/CL Rwy's 17R, 22 and 35L

FAF to MAP 6 NM					
Knots	60	90	120	150	180
Min:Sec	6:00	4:00	3:00	2:24	2:00

CATEGORY	A	B	C	D	E
S-ILS 22	231/18    200 (200-½)				
S-LOC 22	560/24	529 (600-½)	560/55    529 (600-1)		
<b>C</b> CIRCLING	560-1	527 (600-1)	580-1½ 547 (600-1½)	640-2 607 (700-2)	700-2¼ 667 (700-2¼)