



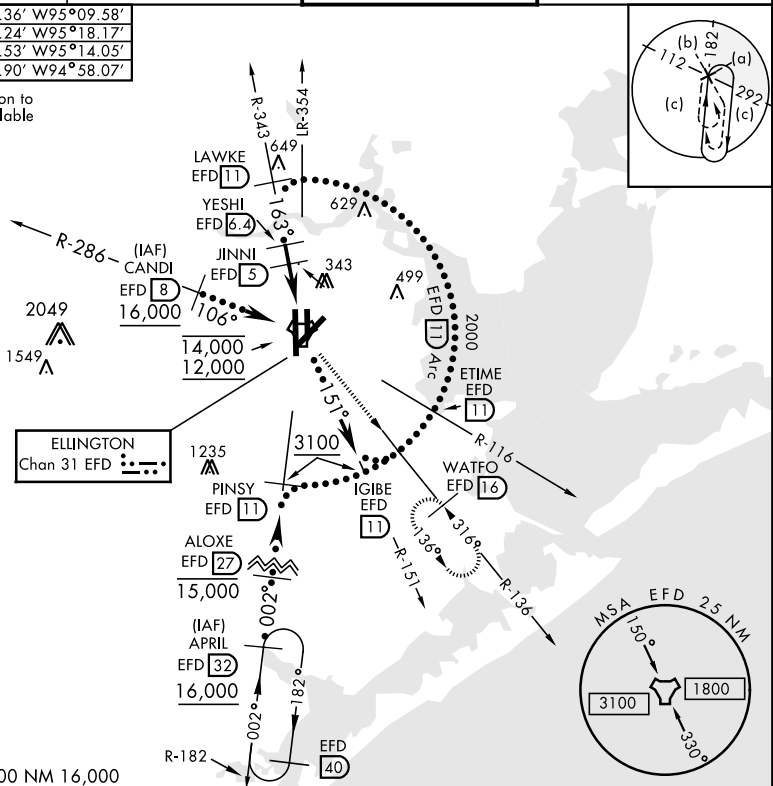
HOUSTON, TEXAS

## HI-TACAN RWY 17R

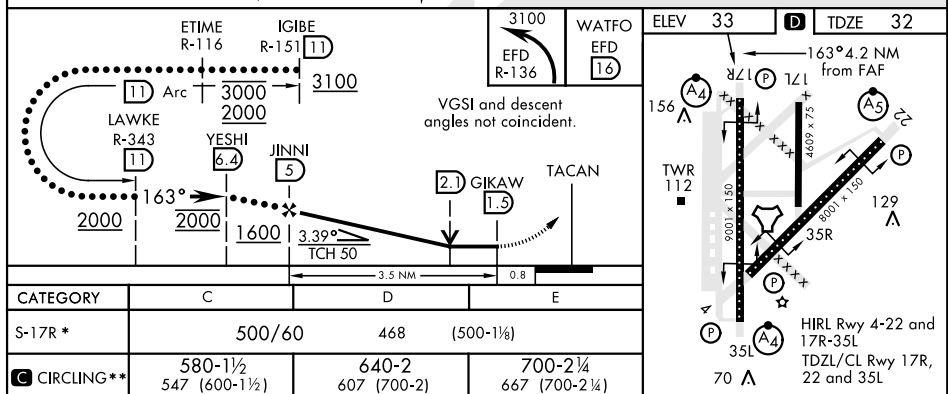
TACAN EFD Chan <b>31</b>	APCH CRS <b>163°</b>	Rwy Idg <b>9001</b> TDZE <b>32</b> Arpt Elev <b>33</b>	AL-197 [USAF]	ELLINGTON (KEFD)
RADAR required for procedure entry.			MALSF	MISSED APPROACH: Climbing left turn to 3100 on EFD TACAN R-136 to WATFO/EFD 16 DME and hold.
 * When ALS inop, increase CAT CDE vis to 1½ miles. ** Circling not authorized W of Rwy 17R-35L.				
ATIS <b>135.575 269.9</b>		HOUSTON APP CON <b>134.45 284.0</b>	TOWER <b>126.05 253.5</b>	GND CON <b>121.6 275.8</b>

EFD TACAN	N29°36.36' W95°09.58'
CANDI	N29°39.24' W95°18.17'
APRIL	N29°04.53' W95°14.05'
WATFO	N29°23.90' W94°58.07'

### Enroute penetration to 11 DME Arc available



EMERG SAFE ALT 100 NM 16,000



HOUSTON, TEXAS

29° 36' N-95° 10' W

ELLINGTON (KEFD)

## HI-TACAN RWY 17R

Amdt 4B 09SEP21

SC-5, 07 AUG 2025 to 04 SEP 2025

SC-5, 07 AUG 2025 to 04 SEP 2025