


HOUSTON, TEXAS

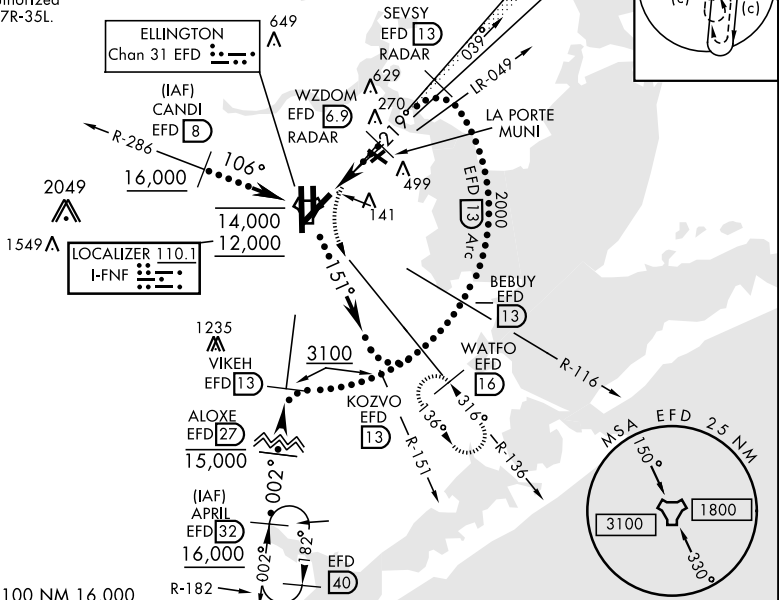
HI-ILS Y or LOC Y RWY 22

LOC I-FNF 110.1	APCH CRS 219°	Rwy Idg 8001 TDZE 31 Arpt Elev 33	AL-197 [USAF]	ELLINGTON (KEFD)
DME required. RADAR required for procedure entry.				MISSED APPROACH: Climb to 700 then climbing left turn to 3100 on EFD TACAN R-136 to EFD/EFD16 DME and hold.
▼ *When ALS inop, increase CAT E RVR to 40. **When ALS inop, increase CAT E vis to 1½ mile.				

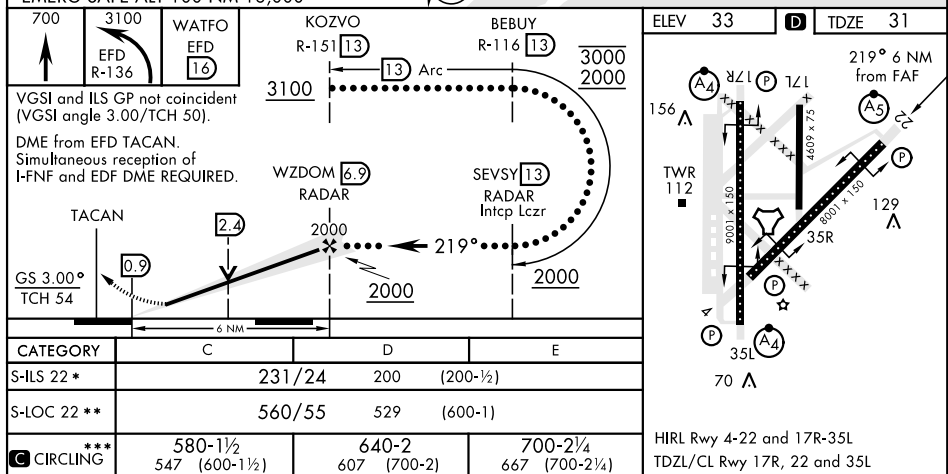
<p>ATIS</p> <p>135.575 269.9</p>	<p>HOUSTON APP CON</p> <p>134.45 284.0</p>	<p>TOWER</p> <p>126.05 253.5</p>	<p>GND CON</p> <p>121.6 275.8</p>
---	---	---	--

EFD TACAN	N29°36.36' W95°09.58'
CANDI	N29°39.24' W95°18.17'
APRIL	N29°04.53' W95°14.05'
WATFO	N29°23.90' W94°58.07'

*** Circling not authorized
West of Rwy 17R-35L



FMERG SAFF ALT 100 NM 16.000



HOUSTON, TEXAS

29°36'N-95°10'W

ELLINGTON (KEFD)

Amdt 2 15AUG19

HI-ILS Y or LOC Y RWY 22

SC-5, 07 AUG 2025 to 04 SEP 2025

SC-5, 07 AUG 2025 to 04 SEP 2025