

(ELD1.ELD) 24193

AL-197 (FAA)

ELLINGTON (EFD)
HOUSTON, TEXAS

EL DORADO ONE DEPARTURE

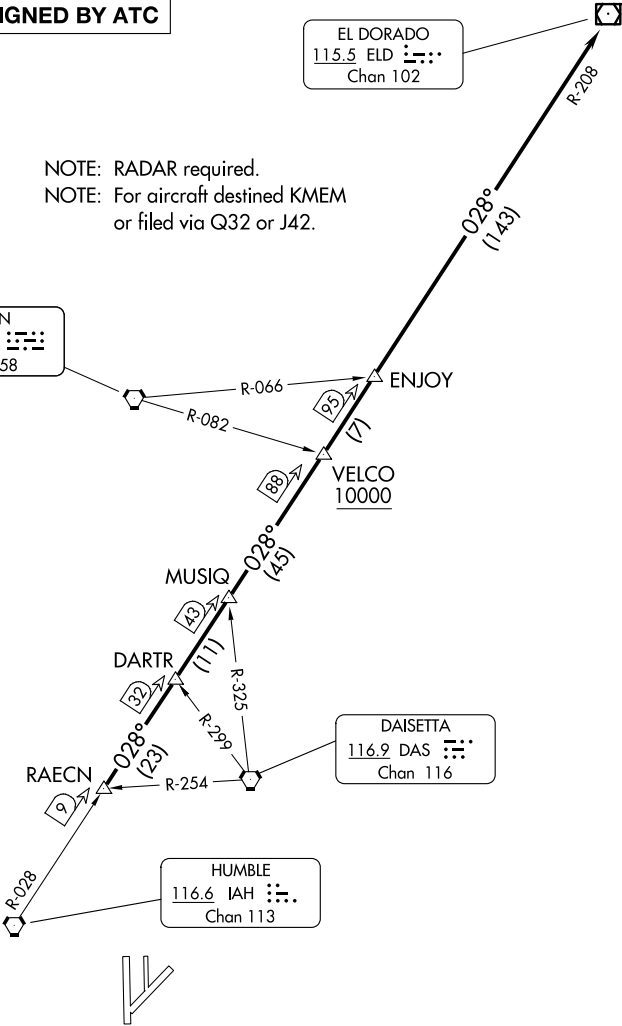
ATIS
135.575 269.9
GND CON
121.6 275.8
ELLINGTON TOWER
126.05 253.5
HOUSTON DEP CON
134.45 284.0

TOP ALTITUDE:
ASSIGNED BY ATC

EL DORADO
115.5 ELD
Chan 102

NOTE: RADAR required.
NOTE: For aircraft destined KMEM
or filed via Q32 or J42.

LUFKIN
112.1 LFK
Chan 58



TAKEOFF MINIMUMS

Rwys 4, 17L/R, 35L/R: Standard.
Rwy 22: 200-1¼ or standard with minimum
climb of 214' per NM to 300 or alternatively with
standard takeoff minimums and a normal 200' per
NM climb gradient, takeoff must occur no later than
1400' prior to DER.

NOTE: Chart not to scale.

(CONTINUED ON FOLLOWING PAGE)

EL DORADO ONE DEPARTURE

(ELD1.ELD) 07OCT21

HOUSTON, TEXAS
ELLINGTON (EFD)

SC-5, 07 AUG 2025 to 04 SEP 2025

SC-5, 07 AUG 2025 to 04 SEP 2025