

WAAS CH 69619 W17A	APP CRS 172°	Rwy Idg TDZE 929 Apt Elev 930
--	------------------------	---

RNAV (GPS) RWY 17L

SOUTH TEXAS RGNL AT HONDO (HDO)

RNP APCH.

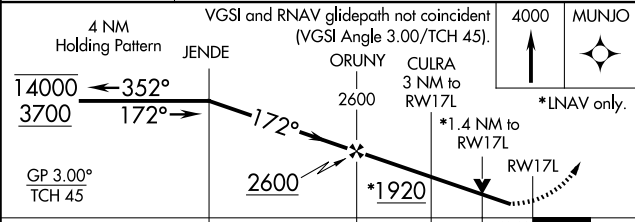
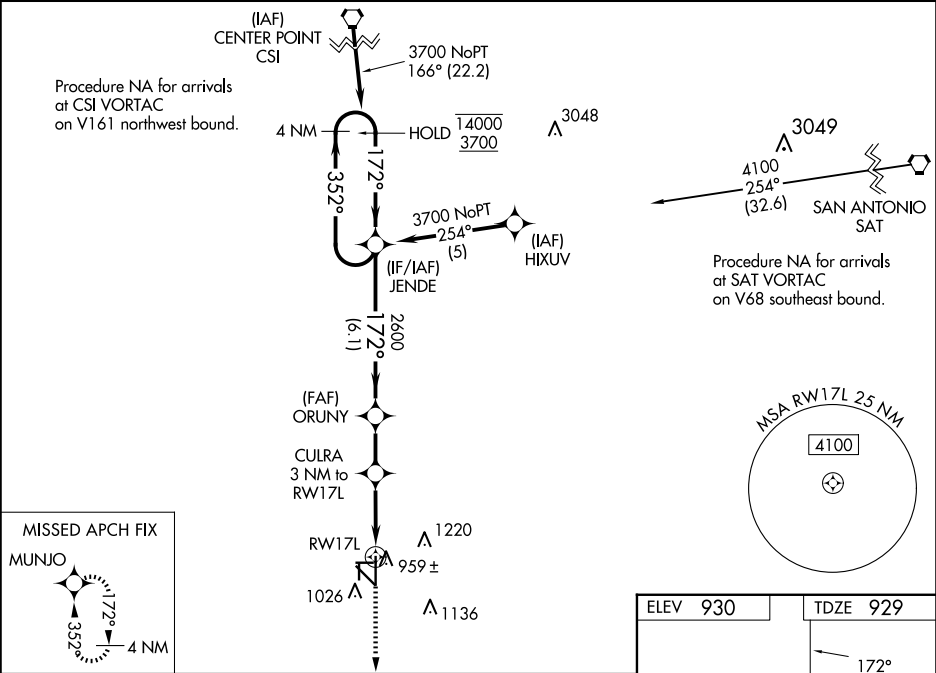
▼

▲

Baro-VNAV and VDP NA when using Castroville altimeter setting. For uncompensated Baro-VNAV systems, LNAV/VNAV NA below -16°C or above 47°C. When local altimeter setting not received, use Castroville altimeter setting and increase all DA 62 feet and all MDA 80 feet, increase LNAV/VNAV all Cnts visibility 1/8 SM, LNAV and Circling Cnts C/D visibility 1/4 SM. Rwy 17L helicopter visibility reduction below 3/4 SM NA. Circling to Rwys 8, 13, 17R, 26, 31 and 35L NA at night.

MISSED APPROACH: Climb to 4000 direct MUNJO and hold, continue climb-in-hold to 4000.

ASOS 119.675	HOUSTON CENTER 134.95 269.4	UNICOM 122.725 (CTAF)
------------------------	---------------------------------------	---------------------------------



CATEGORY	A	B	C	D
LPV DA	1179-1	250 (300-1)		
LNAV/VNAV DA	1314-1¼	385 (400-1¼)		
LNAV MDA	1420-1 491 (500-1)	1420-1⅜ 491 (500-1⅜)	1420-1½ 491 (500-1½)	
CIRCLING	1440-1 510 (600-1)	1520-1 590 (600-1)	1580-1¼ 650 (700-1¼)	1580-2 650 (700-2)

