



VORTAC HLN	APP CRS	Rwy Ldg	N/A
117.7	270°	TDZE	N/A
Chan 124		Apt Elev	3877

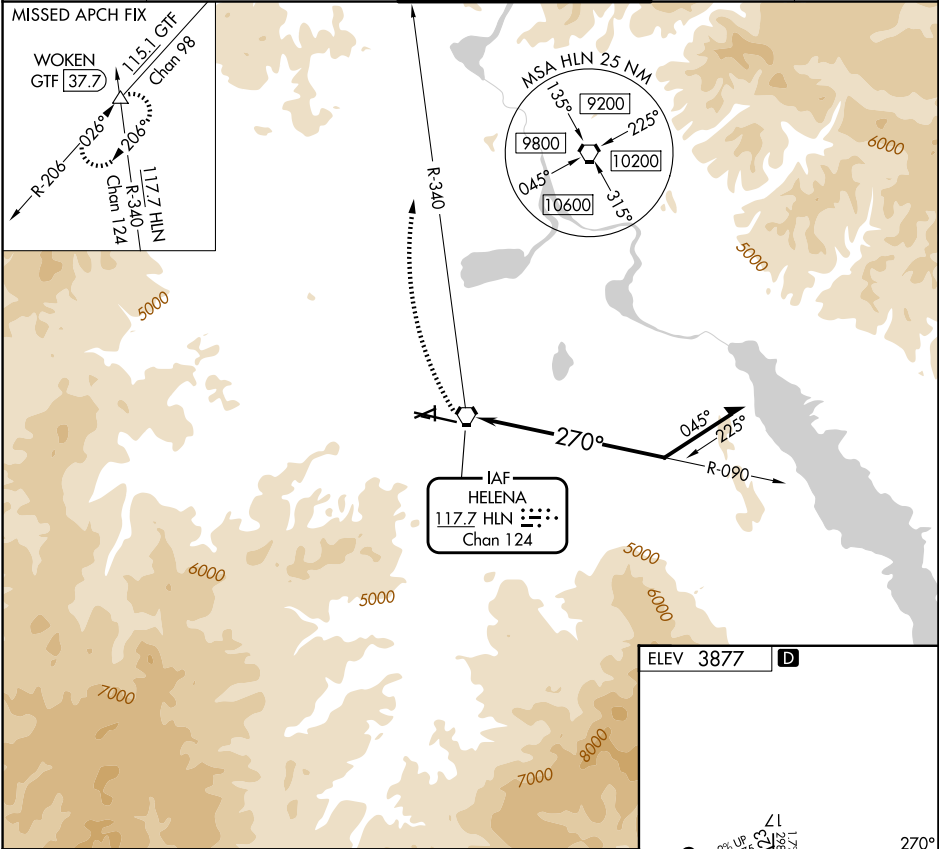
VOR-A
HELENA RGNL (HLN)



Circling NA to Rwys 10 and 28. Circling NA for Cat D south of Rwy 9-27. Circling Rwy 5, 23, 35 NA at night. Rwy 5, 23, 35 helicopter visibility reduction below 1 SM NA.

MISSED APPROACH: Climbing right turn to 9000 on HLN VORTAC R-340 to WOKEN INT/GTF 37.7 DME and hold.

ATIS 120.4	HELENA APP CON ★ 119.5 229.4	HELENA TOWER ★ 118.3 (CTAF) 257.8	GND CON 121.9	UNICOM 122.95
---------------	---------------------------------	--------------------------------------	------------------	------------------



9000

HLN R-340

WOKEN

△

HLN VORTAC

090°

270°

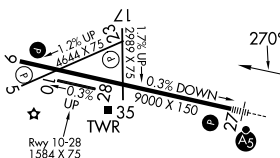
8700

Remain within 10 NM

CATEGORY	A	B	C	D
CIRCLING	7200-1¼ 3323 (3400-1¼)	7200-1½ 3323 (3400-1½)	7200-3 3323 (3400-3)	

ELEV 3877

D



1.2% UP
0.3% DOWN
9000 X 150
TWR 35
RWY 10-28 1584 X 75

REIL Rwys 9, 17, and 35
MIRL Rwys 5-23 and 17-35
HIRL Rwy 9-27

NW-1, 07 AUG 2025 to 04 SEP 2025

NW-1, 07 AUG 2025 to 04 SEP 2025