

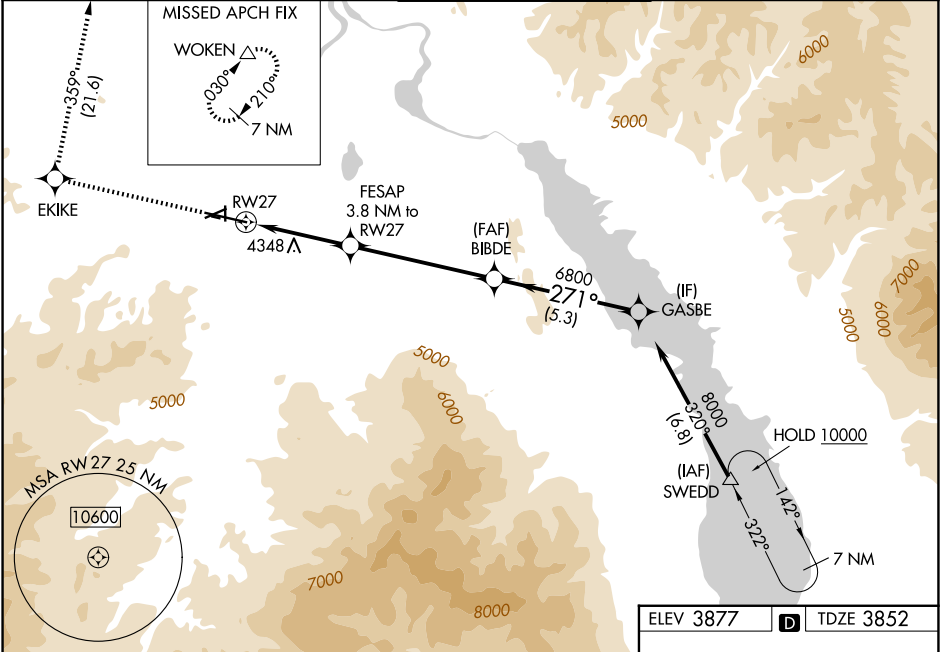
WAAS CH 69405 W27A	APP CRS 271°	Rwy Ldg TDZE Apt Elev 9000 3852 3877
--	------------------------	--

RNAV (GPS) X RWY 27

HELENA RGNL (HLN)

RNP APCH - GPS.	MALSR	MISSED APPROACH: Climb to 9400 direct EKIKE and on track 359° to WOKEN and hold.
<div><div><div></div><div></div><div></div></div><div><div></div><div></div><div></div></div><div><div></div><div></div><div></div></div></div> <div>Circling NA to Rwys 10 and 28. For uncompensated Baro-VNAV systems, LNAV/VNAV NA below -26°C or above 54°C. Circling Rwy 5, 23, 35 NA at night. For inop ALS, increase LPV all Cats visibility to 1½ SM. Circling NA for Cat D south of Rwy 9-27.</div>	<div><div></div><div></div><div></div></div>	

ATIS 120.4	HELENA APP CON ★ 119.5 229.4	HELENA TOWER ★ 118.3 (CTAF) 257.8	GND CON 121.9	UNICOM 122.95
----------------------	--	---	-------------------------	-------------------------



9400	EKIKE	tr 359°	WOKEN	
<div><div><div></div><div></div><div></div></div><div><div></div><div></div><div></div></div><div><div></div><div></div><div></div></div></div> <div>FESAP 3.8 NM to RW27</div> <div>3.1 NM to RW27</div> <div>5120</div> <div>6800</div> <div>271°</div> <div>8000</div> <div>GP 3.00° TCH 55°</div>				
CATEGORY	A	B	C	D
LPV DA	4501-1 ³ / ₈ 649 (700-1 ³ / ₈)			
LNAV/VNAV DA	4724-2 872 (900-2)			
LNAV MDA	4880- ³ / ₄ 1028 (1100- ³ / ₄)	4880-1 1028 (1100-1)	4880-2 ¹ / ₂ 1028 (1100-2 ¹ / ₂)	
CIRCLING	4880-1 ¹ / ₄ 1003 (1100-1 ¹ / ₄)	4880-1 ¹ / ₂ 1003 (1100-1 ¹ / ₂)	6000-3 2123 (2200-3)	

ELEV 3877	TDZE 3852
<div><div><div></div><div></div><div></div></div><div><div></div><div></div><div></div></div><div><div></div><div></div><div></div></div></div> <div>Rwy 10-28 1584 X 75</div> <div>TWR</div> <div>1.7% UP 1644 X 75</div> <div>1.7% UP 2889 X 75</div> <div>0.3% UP</div> <div>0.3% DOWN</div> <div>9000 X 150</div> <div>271°</div>	
REIL Rwys 9, 17, and 35 1	
MIRL Rwys 5-23 and 17-35 1	
HIRL Rwy 9-27 1	