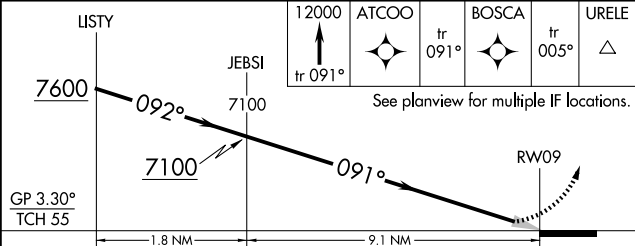
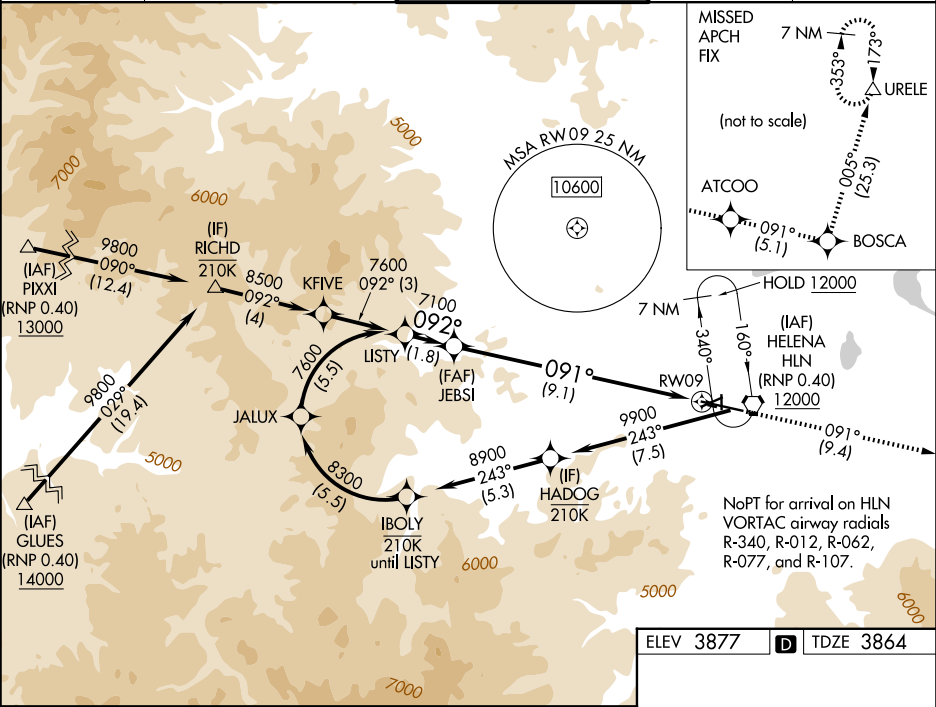


APP CRS	Rwy Ldg	9000
091°	TDZE	3864
	Apt Elev	3877

RNAV (RNP) Z RWY 9  
HELENA RGNL (HLN)

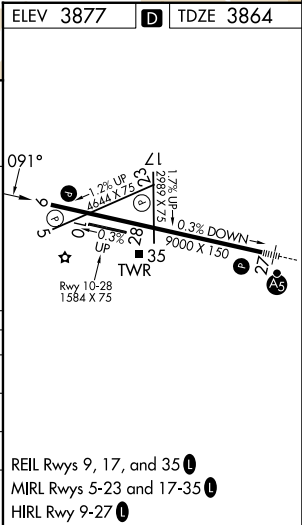
RNP AR APCH - GPS.	MISSED APPROACH: Climb to 12000 on track 091° to ATCOO and on track 091° to BOSCA and on track 005° to URELE and hold.
▼ ✱ -16°C	For uncompensated Baro-VNAV systems, procedure NA below -28°C or above 54°C.

ATIS 120.4	HELENA APP CON ★ 119.5 229.4	HELENA TOWER ★ 118.3 (CTAF) 0 257.8	GND CON 121.9	UNICOM 122.95
---------------	---------------------------------	--	------------------	------------------



CATEGORY	A	B	C	D
RNP 0.11 DA		4224-1	360 (400-1)	
RNP 0.17 DA		4296-1¼	432 (500-1¼)	
RNP 0.30 DA		4489-1¾	625 (700-1¾)	

AUTHORIZATION REQUIRED



NW-1, 07 AUG 2025 to 04 SEP 2025

NW-1, 07 AUG 2025 to 04 SEP 2025