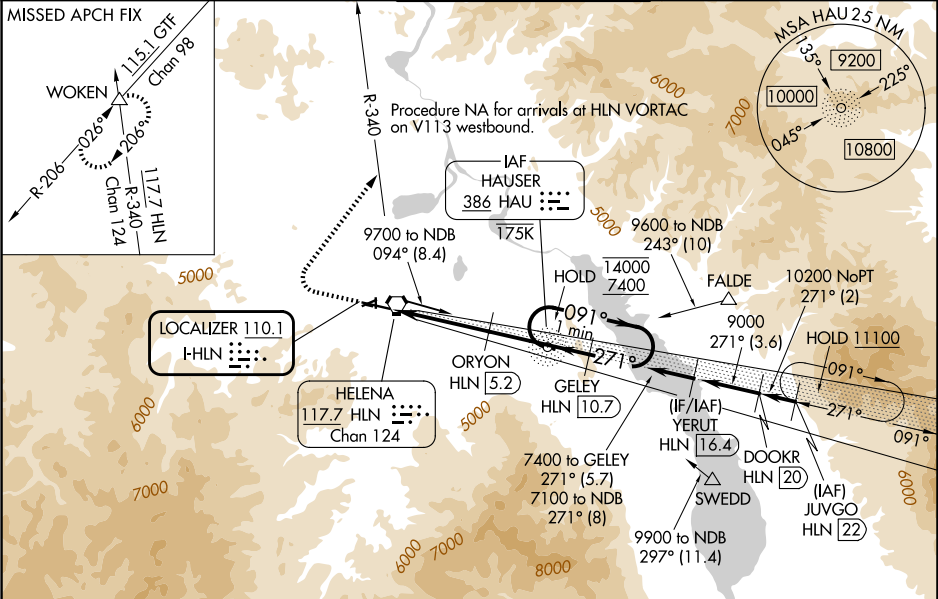


LOC I-HLN	APP CRS	Rwy Ldg	9000
110.1	271°	TDZE	3852
		Apt Elev	3877

ILS Y or LOC Y RWY 27
HELENA RGNL (HLN)

ADF or RADAR required for procedure entry. ADF or DME required.			
<p>⚠ Circling NA to Rwy 10 and 28. Circling Rwy 5, 23, 35 NA at night. Inop table does not apply to S-LOC 27 all Cats. For inop ALS, increase S-ILS 27 all Cats visibility to 1½ SM, ORYON fix minimums: S-LOC 27 Cat C/D/E visibility to 2 SM. Holding at HAU NDB authorized for Cat A and B aircraft only. Circling NA for Cats D and E south of Rwy 9-27. *DME from HLN VORTAC. DME use requires simultaneous reception of I-HLN and HLN DME.</p>			
ATIS 120.4	HELENA APP CON* 119.5 229.4	HELENA TOWER* 118.3 (CTAF) 0 257.8	GND CON 121.9
			UNICOM 122.95



4700	9300	HLN	WOKEN
↑	hdg 021°	R-340	△
One Minute Holding Pattern			
HLN 1.9, ORYON HLN 5.2, HAUS NDB, GELEY HLN 10.7, 7400, 7100, 5640, 2.2 NM, 3.3 NM, 3.3 NM, 2.3 NM			
CATEGORY	A	B	C
S-ILS 27	4496-1½ 644 (700-1½)		
S-LOC 27	5640-1¼ 1788 (1800-1¼)	5640-1½ 1788 (1800-1½)	5640-3 1788 (1800-3)
CIRCLING	5640-1¼ 1763 (1800-1¼)	5640-1½ 1763 (1800-1½)	6000-3 2123 (2200-3)
ORYON FIX MINIMUMS*			
S-LOC 27	4600-½ 748 (800-½)	4600-¾ 748 (800-¾)	4600-1¾ 748 (800-1¾)
CIRCLING	4640-1 763 (800-1)	4600-1¼ 923 (1000-1¼)	6000-3 2123 (2200-3)

ELEV 3877	TDZE 3852
REIL Rwy 9, 17 and 35 MIRL Rwy 5-23 and 17-35 HIRL Rwy 9-27	
FAF to MAP 8.7 NM	
Knots	60 90 120 150 180
Min:Sec	8:42 5:48 4:21 3:29 2:54

NW-1, 07 AUG 2025 to 04 SEP 2025

NW-1, 07 AUG 2025 to 04 SEP 2025