

LOC I-HFD <b>109.7</b>	APP CRS <b>002°</b>	Rwy Ldg TDZE Apt Elev	<b>4006</b> <b>17</b> <b>18</b>
---------------------------	------------------------	-----------------------------	---------------------------------------

LDA RWY 2

HARTFORD-BRAINARD (HF'D)

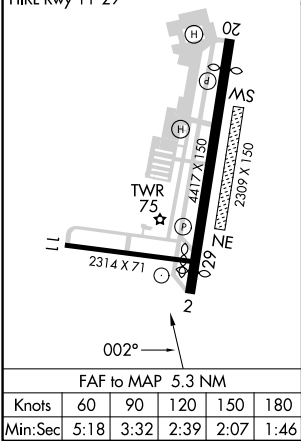
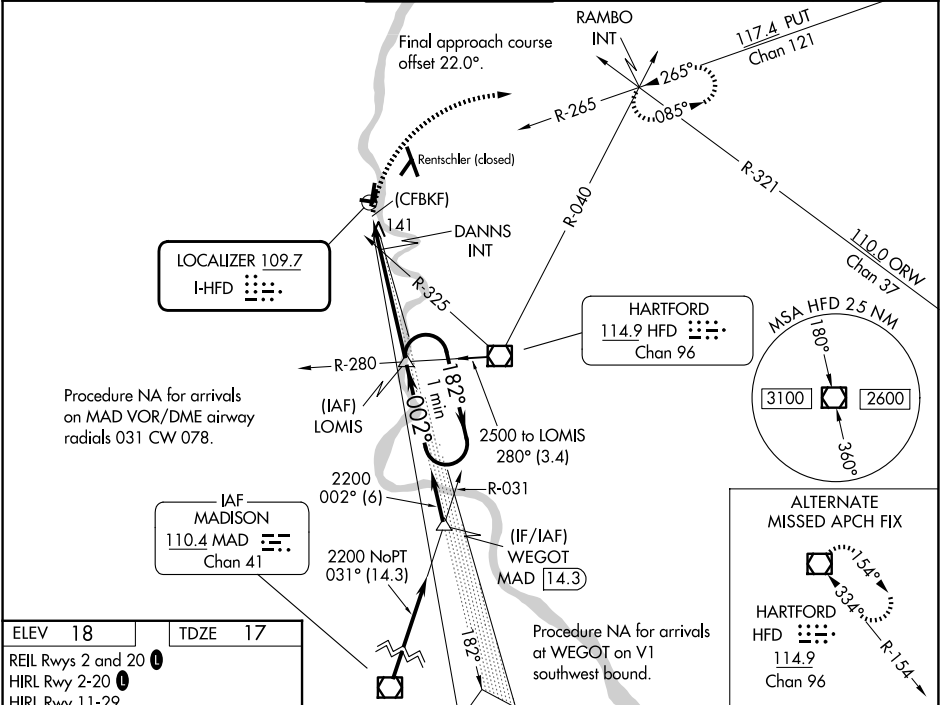
▼

▲

Helicopter visibility reduction below 1 SM NA. Night landing: Rwy 11, 20, 29 NA. Night landing: Rwy 2 operational VGSI required, remain on or above VGSI glidepath until threshold.

MISSED APPROACH: Climbing right turn to 2500 on heading 090° and PUT VOR/DME R-265 to RAMBO INT and hold.

ATIS <b>126.45</b>	YANKEE APP CON <b>127.8 269.325</b>	BRAINARD TOWER ★ <b>119.6 (CTAF) 0 248.2</b>	GND CON <b>121.6</b>	CLNC DEL <b>121.6</b>	UNICOM <b>122.95</b>
-----------------------	--	---	-------------------------	--------------------------	-------------------------



--	--

NE-1, 07 AUG 2025 to 04 SEP 2025

NE-1, 07 AUG 2025 to 04 SEP 2025