

WAAS CH 78013 W31A	APP CRS 308°	Rwy Ldg 8129 TDZE 308 Apt Elev 310
----------------------------------------	------------------------	---------------------------------------------------------------

RNAV (GPS) RWY 31
HARRISBURG INTL (MDT)

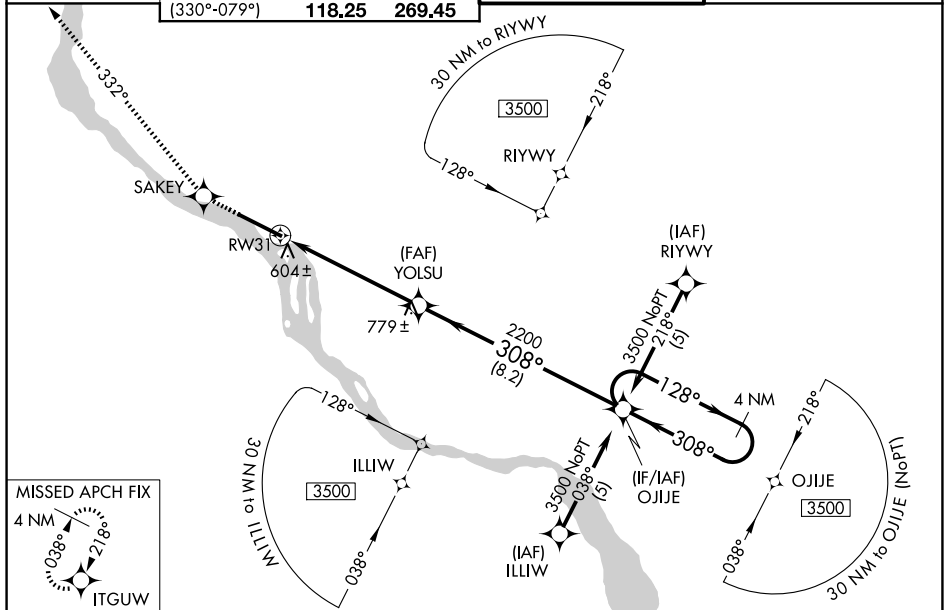
RNP APCH - GPS.

T Circling NA south of Rwy 13-31. For uncompensated Baro-VNAV
A systems, LNAV/VNAV NA below -15°C or above 48°C.

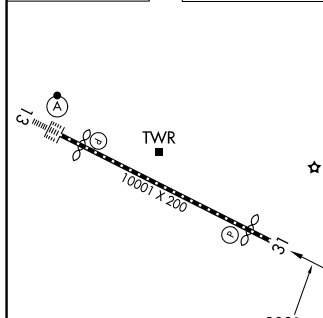
 -16°C

MISSED APPROACH: Climb to 3500 direct SAKEY and on track 332° to ITGUW and hold.

ATIS 118.8	HARRISBURG APP CON		HARRISBURG INTL TOWER		GND CON	
	(080°-179°)	126.45	281.525			
	(180°-329°)	124.1	273.525	124.8	269.35	121.7 348.6
	(330°-079°)	118.25	269.45			



ELEV	310	D	TDZE	308
------	-----	----------	------	-----



VGS1 and RNAV glidepath not coincident (VGS1 Angle 3.00°/TCH 51).

4 NM Holding Pattern

OJJE

128° → 3500

← 308°

YOLSU

308°

2200

RW31

5.7 NM

8.2 NM

GP 3.00° TCH 51

CATEGORY	A	B	C	D
LPV DA		558/50	250 (300-1)	
LNAV/VNAV DA		921-2¼	613 (700-2¼)	
LNAB MDA	1100/55 792 (800-1)	1100/60 792 (800-1¼)	1100-2¼ 792 (800-2¼)	1100-2½ 792 (800-2½)
CIRCLING	1100-1 790 (800-1)	1100-1¼ 790 (800-1¼)	1100-2¼ 790 (800-2¼)	1440-3 1130 (1200-3)