

WAAS	APP CRS	Rwy Ldg	8070
CH 86313	128°	TDZE	308
W13A		Apt Elev	310

RNAV (GPS) RWY 13

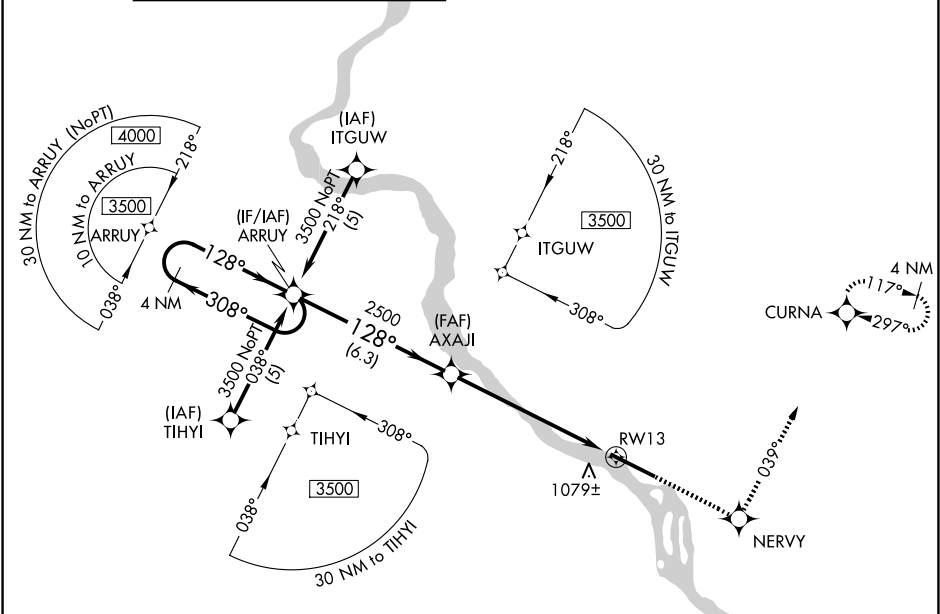
HARRISBURG INTL (MDT)

Circling NA south of Rwy 13-31. For uncompensated Baro-VNAV systems, LNAV/VNAV NA below -1.5°C (5°F) or above 48°C (118°F). DME/DME RNP-0.3 NA. Inop table does not apply to LNAV/VNAV all Cats.

ALSF-2

MISSED APPROACH: Climb to 3500 direct NERVY and via track 039° to CURNA and hold, continue climb-in-hold to 3500.

ATIS 118.8	HARRISBURG APP CON (080°-179°) 126.45 281.525 (180°-329°) 124.1 273.525 (330°-079°) 118.25 269.45	HARRISBURG INTL TOWER 124.8 269.35	GND CON 121.7 348.6
---------------	--	---------------------------------------	------------------------



4 NM Holding Pattern ARRUY

3500 ← 308°

128° →

128°

AXAJI

3500 NERVY tr 039° CURNA

*LNAV only.

VGSI and RNAV glidepath not coincident (VGSI Angle 3.00/TCH 75).

GP 3.00° TCH 54

2500

*2.5 NM to RWY 13

RWY 13

6.3 NM 4.1 NM 2.5 NM

CATEGORY	A	B	C	D
LPV DA	558/24 250 (300-1/2)			
LNAV/VNAV DA	1572-5 1264 (1300-5)			
LNAV MDA	1180/24 872 (900-1/2)	1180/40 872 (900-3/4)	1180-2 872 (900-2)	1180-2 1/4 872 (900-2 1/4)
CIRCLING	1180-1 870 (900-1)	1180-1 1/4 870 (900-1 1/4)	1180-2 1/2 870 (900-2 1/2)	1440-3 1130 (1200-3)

ELEV 310 D TDZE 308

128°

039°

1000' x 200'

TWR

TDZ/CL Rwy 13
REIL Rwy 31
HIRL Rwy 13-31

NE-4, 07 AUG 2025 to 04 SEP 2025

NE-4, 07 AUG 2025 to 04 SEP 2025