


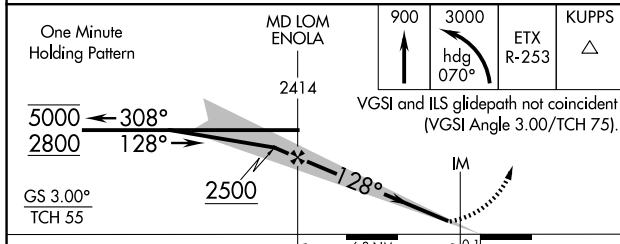
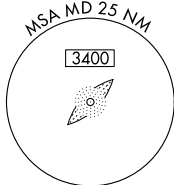
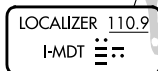
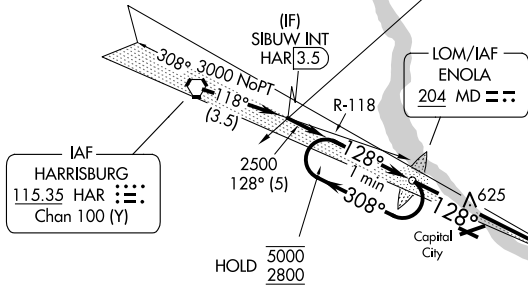
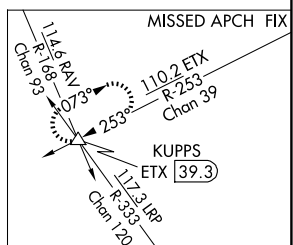
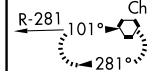
ILS or LOC RWY 13
HARRISBURG INTL (MDT)

ALSF-2

MISSED APPROACH: Climb to 900 then climbing left turn to 3000 on heading 070° and on ETX VOR/DME R-253 to KUPPS INT/ETX 39.3 DME and hold.

ALTERNATE	HARRISBURG
MISSED	HAR 
APCH FIX	<u>115.35</u>
	Chan 100 (Y)

Procedure NA for arrival on HAR VORTAC
airway radials 102 CW 157 and at
HAR VORTAC on V12 eastbound.



CATEGORY	A	B	C	D
S-ILS 13	508/18		200 (200-½)	
S-LOC 13	900/24	592 (600-½)	900-1¼	592 (600-1¼)
CIRCLING	900-1 590 (600-1)	980-1 670 (700-1)	1000-2 690 (700-2)	1420-3 1110 (1200-3)

ELEV 310
D
TDZE 308

FAF to MAP 6.4 NM					
Knots	60	90	120	150	180
Min:Sec	6:24	4:16	3:12	2:34	2:08

NE-4, 07 AUG 2025 to 04 SEP 2025