

LOC I-MDT <b>110.9</b>	APP CRS <b>128°</b>	Rwy Ldg <b>8070</b> TDZE <b>308</b> Apt Elev <b>310</b>
---------------------------	------------------------	--

ILS RWY 13 (CAT II & III)  
HARRISBURG INTL (MDT)

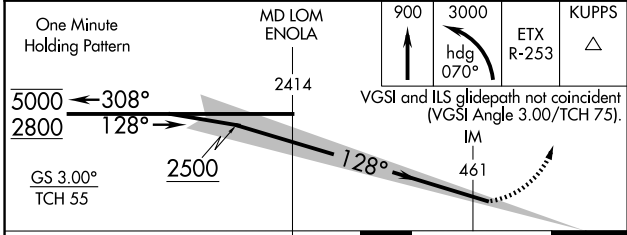
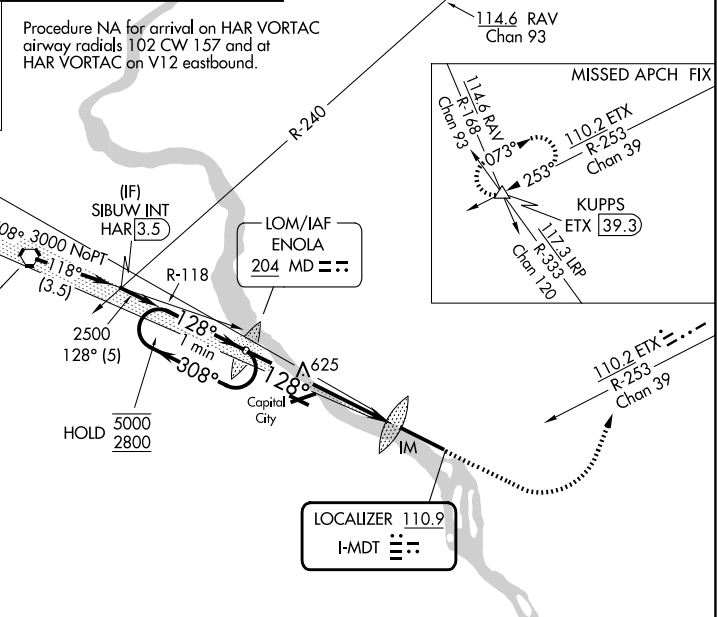
CAT II: RVR 1000 authorized with specific OPSPEC, MSPEC, or LOA approval and use of autoland or HUD to touchdown.	ALSF-2 	MISSED APPROACH: Climb to 900 then climbing left turn to 3000 on heading 070° and on ETX VOR/DME R-253 to KUPPS INT/ETX 39.3 DME and hold.
---	------------	--

ATIS <b>118.8</b>	HARRISBURG APP CON (080°-179°) <b>126.45 281.525</b> (180°-329°) <b>124.1 273.525</b> (330°-079°) <b>118.25 269.45</b>	HARRISBURG INTL TOWER <b>124.8 269.35</b>	GND CON <b>121.7 348.6</b>
----------------------	---	--	-------------------------------

ALTERNATE MISSED APCH FIX

HARRISBURG HAR 115.35  
Chan 100 (Y)

R-281 101° 281°



CATEGORY	A	B	C	D
S-ILS 13		CAT II	RA 100/12	100 DA 408
S-ILS 13		CAT III	RVR 06	

CATEGORY II & III ILS - SPECIAL AIRCREW & AIRCRAFT CERTIFICATION REQUIRED

ELEV 310 TDZE 308

TDZ/CL Rwy 13

REIL Rwy 31

HIRL Rwy 13-31