

WAAS CH 70610 W08A	APP CRS 082°	Rwy Ldg TDZE 342 Apt Elev 347
--	------------------------	---

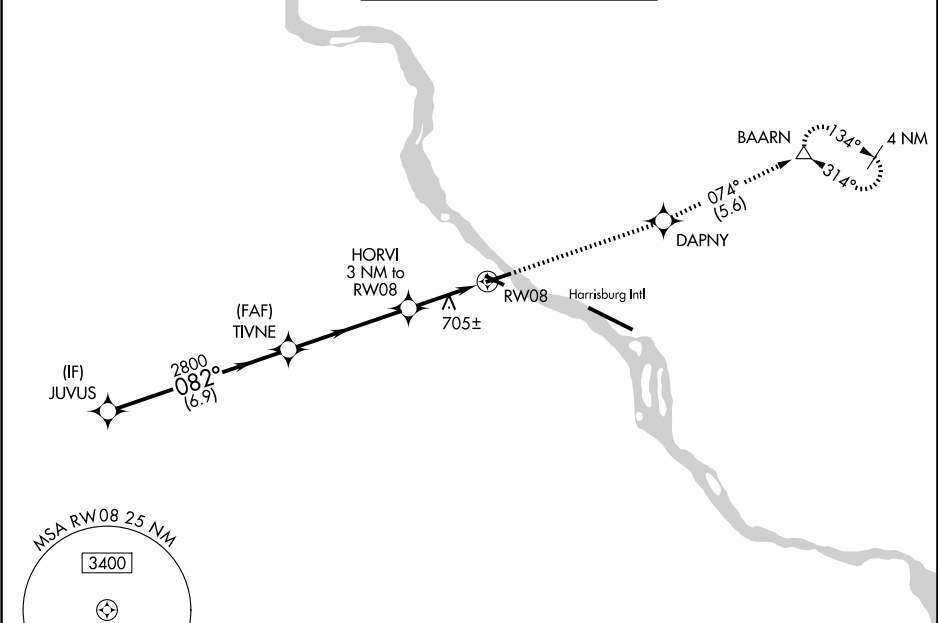
RNAV (GPS) RWY 8
CAPITAL CITY (CXY)

⚠ DME/DME RNP-0.3 NA. When local altimeter setting not received, use Harrisburg Intl altimeter setting. For inop MALSR, increase LPV all Cats visibility to 1½ mile and increase LNAV Cat C, D visibility to 1¾ mile. Helicopter visibility reduction below 1 SM NA. Procedure NA at night.

MALSR

MISSED APPROACH: Climb to 3000 direct DAPNY and on track 074° to BAARN and hold.

ATIS 134.95	HARRISBURG APP CON 124.1 273.525	CAPITAL CITY TOWER ★ 119.5 (CTAF) 0 257.8	GND CON 121.9	UNICOM 122.95
-----------------------	--	---	-------------------------	-------------------------



RADAR REQUIRED

VGSI and RNAV glidepath not coincident (VGSI Angle 3.00/TCH 55).

JUVUS

3100

082°

2800

TIVNE

2800

HORVI 3 NM to RW08

*1340

RW08

*LNAV only

GP 3.00° TCH 58

6.9 NM 4.6 NM 3 NM

CATEGORY	A	B	C	D
LPV DA	833-1¼		491 (500-1¼)	
LNAV MDA	960-1 625 (700-1)		960-1¾ 625 (700-1¾)	
CIRCLING	1200-1¼ 853 (900-1¼) 1700-1½ 1353 (1400-1½)		1700-3 1353 (1400-3)	

ELEV 347	TDZE 342
----------	----------

HIRL Rwy 8-26 0

MIRL Rwy 12-30 0