

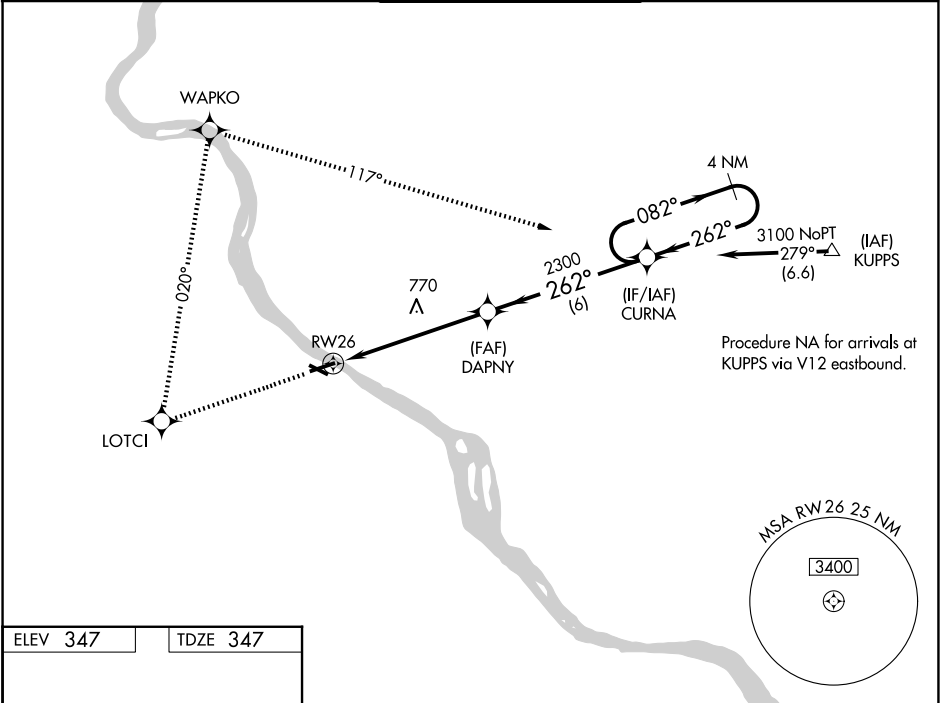
WAAS CH <b>86800</b> <b>W26A</b>	APP CRS <b>262°</b>	Rwy Ldg TDZE <b>347</b> Apt Elev <b>347</b>
--	------------------------	---

RNAV (GPS) RWY 26

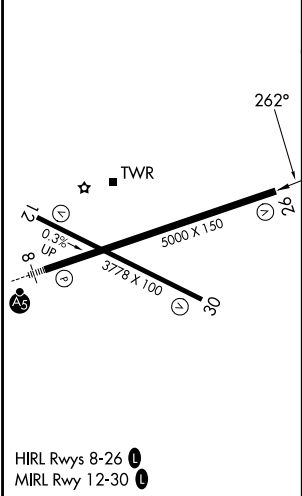
CAPITAL CITY (CXY)

RNP APCH - GPS.		MISSED APPROACH: Climb to 3100 direct LOTCI and right turn via 020° track to WAPKO and right turn 117° track to CURNA and hold.		
▼ When local altimeter setting not received, use Harrisburg Intl altimeter setting. Circling Rwy 12 NA at night. Rwy 26 helicopter visibility reduction below ¾ SM NA. Circling NA south of Rwy 8-26. VDP NA when using Harrisburg Intl altimeter setting.				

ATIS <b>134.95</b>	HARRISBURG APP CON <b>124.1 273.525</b>	CAPITAL CITY TOWER ★ <b>119.5 (CTAF) 0 257.8</b>	GND CON <b>121.9</b>	UNICOM <b>122.95</b>
-----------------------	--	---	-------------------------	-------------------------



ELEV <b>347</b>	TDZE <b>347</b>
-----------------	-----------------



3100	LOTCI	WAPKO	CURNA	4 NM Holding Pattern
↑	✧	tr 020°	tr 117°	
VGSI and RNAV glidepath not coincident (VGSI Angle 3.10/TCH 56).				CURNA
DAPNY				082° → 3100
RW26				← 262°
3.2 NM to RW26				GP 3.00° TCH 56
2300				
3.2 NM 2.7 NM 6 NM				
CATEGORY	A	B	C	D
LPV DA	847-1⅓ 500 (500-1⅓)			
LNAV MDA	1460-1¼ 1113 (1200-1¼)	1460-1½ 1113 (1200-1½)	1460-3	1113 (1200-3)
CIRCLING	1460-1¼ 1113 (1200-1¼)	1700-1½ 1353 (1400-1½)	1700-3	1353 (1400-3)