

LOC I-CXY	APP CRS	Rwy Ldg	5000
109.1	082°	TDZE	342
		Apt Elev	347

ILS or LOC RWY 8

CAPITAL CITY (CXY)

▼

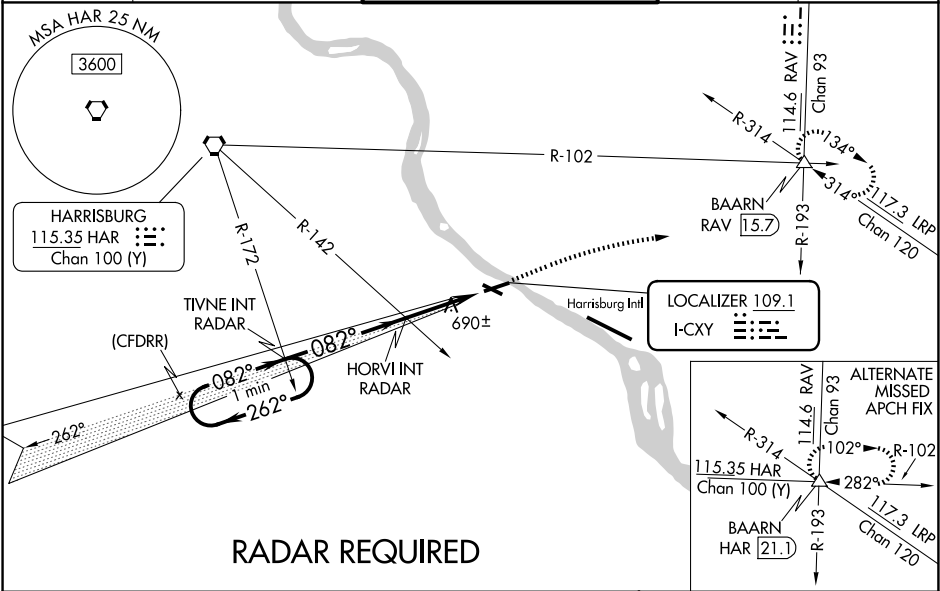
⚠

When local altimeter setting not received, use Harrisburg Intl altimeter setting. For inop MALS, increase S-ILS-8 all Cats visibility to 1¾ mile and S-LOC-8 Cat A and HORVI FIX minimums Cat A and B visibility to 1 mile. Night landing Rwy 12, 30 NA. Helicopter visibility reduction below ¾ SM NA.

MALS

MISSED APPROACH: Climb to 1100 then climbing right turn to 3000 on heading 087° and on RAV VORTAC R-193 to BAARN INT/RAV 15.7 DME and hold.

ATIS	HARRISBURG APP CON	CAPITAL CITY TOWER ★	GND CON	UNICOM
134.95	124.1 273.525	119.5 (CTAF) 0 257.8	121.9	122.95



VGSI and ILS glidepath not coincident (VGSI Angle 3.00/TCH 55).

One Minute Holding Pattern

GS 3.00° TCH 58

TIVNE INT RADAR

HORVI INT RADAR

1100

3000

hdg 087°

RAV R-193

BAARN

ELEV 347

TDZE 342

* LOC only

3000

2800

262°

082°

2800

082°

1340

4.6 NM

3 NM

CATEGORY

A

B

C

D

S-ILS 8

834-1¼

492 (500-1¼)

S-LOC 8

1340-1

1005 (1000-1)

1340-2½

1005 (1000-2½)

CIRCLING

1340-1¼

993 (1000-1¼)

1700-1½

1353 (1400-1½)

1700-3

1353 (1400-3)

HORVI FIX MINIMUMS

S-LOC 8

940-1

605 (600-1)

940-1¾

605 (600-1¾)

CIRCLING

1200-1¼

853 (900-1¼)

1700-1½

1353 (1400-1½)

1700-3

1353 (1400-3)

HIRL Rwys 8-26

MIRL Rwy 12-30

FAF to MAP 7.6 NM

Knots

60

90

120

150

180

Min:Sec

7:36

5:04

3:48

3:02

2:32