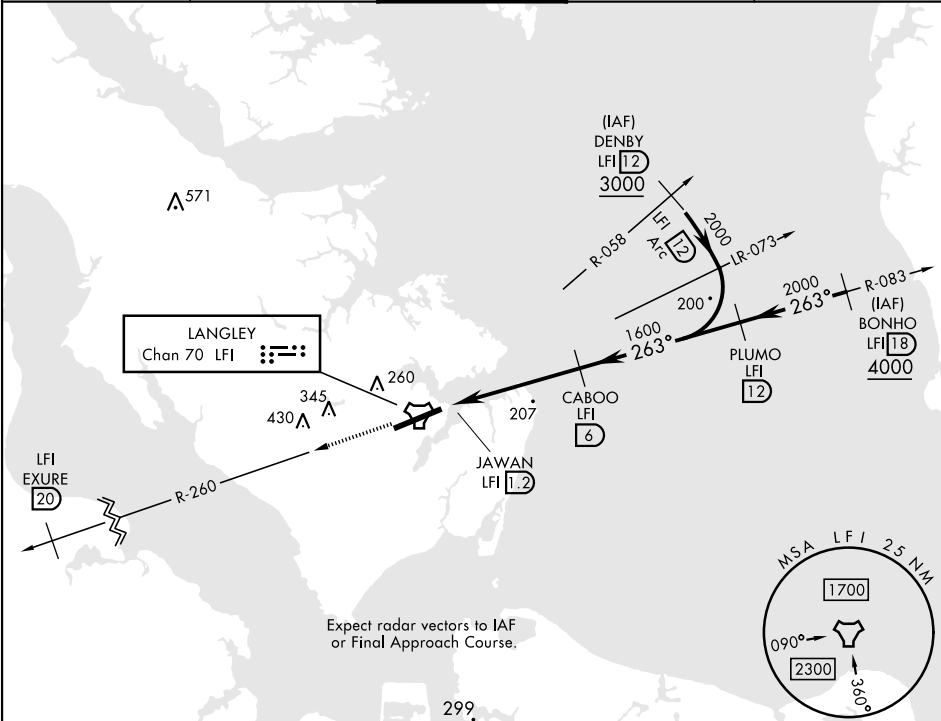


TACAN Y RWY 26

TACAN LFI Chan 70	APCH CRS 263°	Rwy ldg 10,002 TDZE 8 Arpt Elev 8	[USAF]	LANGLEY AFB (KLFI)
* When ALS inop, increase CAT AB RVR to 55 and vis to 1 mile, CAT CDE vis to 1½ miles. ** Circling not authorized S of Rwy 8-26.			ALSF-1 A1	MISSED APPROACH: Climb to 3000 on LFI TACAN R-260 to EXCURE LFI 20 DME, then as instructed by ATC.

ATIS ★ 270.1	NORFOLK APP CON 125.7 335.625	TOWER ★ 125.0 253.5	GND CON 121.7 275.8	CLNC DEL 118.85 257.625
-----------------	----------------------------------	------------------------	------------------------	----------------------------



EMERG SAFE ALT 100 NM 4100

<div>3000</div> <div>LFI</div> <div>R-260</div>	<div>EXCURE</div> <div>LFI</div> <div>20</div>		<div><div><div><div><div></div><div>LFI TACAN</div></div><div><div><div><div><div></div><div>LFI 2.1</div></div><div><div><div><div><div></div><div>LFI 1.2</div></div><div><div><div><div><div></div><div>LFI 6</div></div><div><div><div><div><div></div><div>LFI 12</div></div></div></div></div><div><div><div><div><div></div><div>263°</div></div><div><div><div><div><div></div><div>2000</div></div><div><div><div><div><div></div><div>1600</div></div></div></div></div><div><div><div><div><div></div><div>2.74°</div></div><div><div><div><div><div></div><div>TCH 57</div></div></div></div></div></div></div></div><div><div><div><div><div></div><div>0.5</div></div><div><div><div><div><div></div><div>4.8 NM</div></div></div></div></div></div></div></div></div></div></div></div></div></div></div></div></div></div></div></div></div></div></div></div></div></div>				
	CATEGORY						
S-26*	480/24 472 (500-½)		480/50 472 (500-1)				
<div><div></div><div>CIRCLING</div><div>**</div></div>	520-1 512 (600-1)	560-1 552 (600-1)	700-2 692 (700-2)	740-2¼ 732 (800-2¼)	740-2½ 732 (800-2½)	HIRL Rwy 8-26	

263°

A1

P

TWR

10,002 X 150

TACAN Y RWY 26

NE-3, 07 AUG 2025 to 04 SEP 2025

NE-3, 07 AUG 2025 to 04 SEP 2025