

WAAS CH 41171 W26A	APCH CRS 258°	Rwy ldg TDZE Arpt Elev	10,002 8
--------------------------	------------------	------------------------------	-------------

- (USAF)

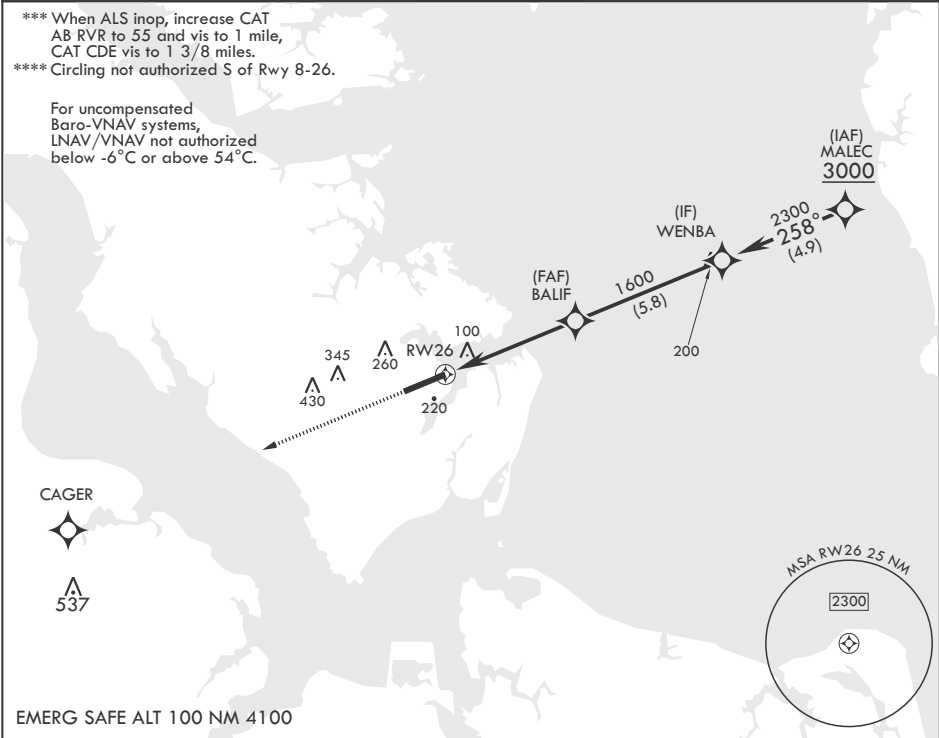
LANGLEY AFB (KLFJ)

RNP APCH-GPS	ALSF-1	MISSED APPROACH: Climb to 500 then climbing left to 3000 direct CAGER, then as instructed by ATC.
* When ALS inop, increase RVR to 40, vis to 3/4 mile. ** When ALS inop, increase RVR to 55, vis to 1 mile.		

ATIS★ 270.1	NORFOLK APP CON/DEP CON 125.7 335.625	TOWER★ 125.0 253.5	GND CON 121.7 275.8	CLNC DEL 118.85 257.625
----------------	------------------------------------------	-----------------------	------------------------	----------------------------

*** When ALS inop, increase CAT
AB RVR to 55 and vis to 1 mile,
CAT CDE vis to 1 3/8 miles.
**** Circling not authorized S of Rwy 8-26.

For uncompensated
Baro-VNAV systems,
LNAV/VNAV not authorized
below -6°C or above 54°C.



500		3000		CAGER		ELEV 8		TDZE 8			
CATEGORY		A		B		C		D		E	
LPV DA*		208/24		361		200		(200-½)			
LNAV/VNAV DA**		369/35		361		(400-¾)		373/35		365 (400-¾)	
LNAV MDA***		480/24		472 (500-½)		480/50		472		(500-1)	
CIRCLING****		520-1 512 (600-1)		560-1 552 (600-1)		700-2 692 (700-2)		740-2¼ 732 (800-2¼)		740-2½ 732 (800-2½)	

BCN

HIRL all Rwys