

WAAS
CH **99399**
W07A

APP CRS
072°

Rwy Ldg
TDZE **683**
Apt Elev **683**

RNAV (GPS) RWY 7

EUGENE F KRANZ TOLEDO EXPRESS (TOL)

RNP APCH.

T

A

ASR

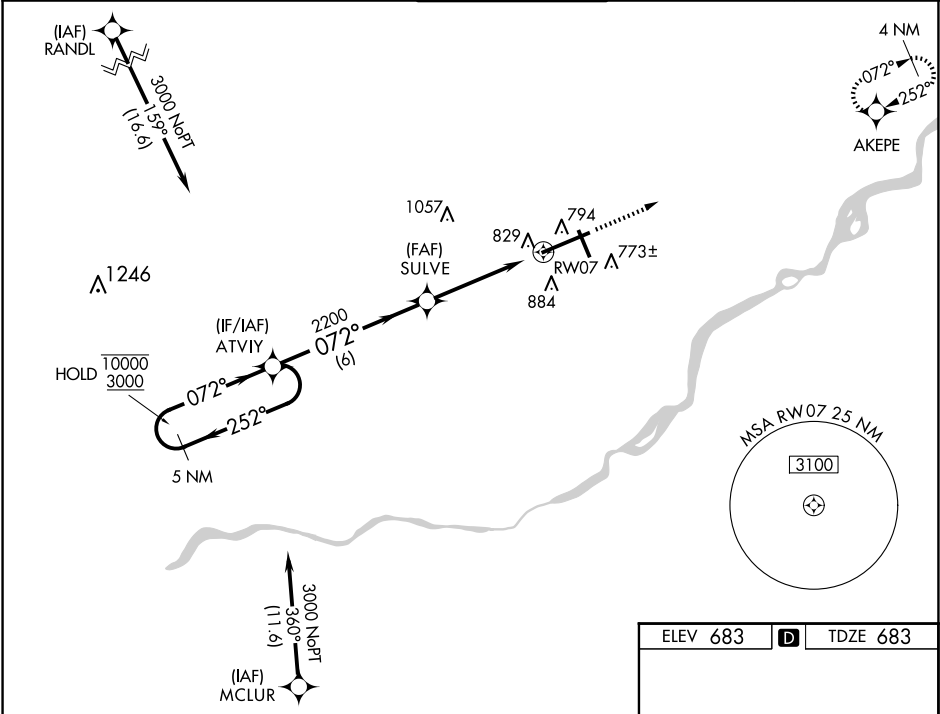
For uncompensated Baro-VNAV systems, LNAV/VNAV NA below -17°C or above 52°C.
For inop ALS, increase LPV all Cats visibility to RVR 5000. Increase LNAV/VNAV Cat E and LNAV Cat E visibility to 1⅓ SM.

ALSF-2

A

MISSED APPROACH:
Climb to 3000 direct AKEPE and hold.

ATIS 118.75 290.225	TOLEDO APP CON 134.35 317.55	TOLEDO TOWER 118.1 285.4	GND CON 121.9 348.6	CLNC DEL 121.75 348.6
-------------------------------	--	------------------------------------	-------------------------------	---------------------------------



5 NM Holding Pattern

ATVIY

10000
3000

GP 3.00°
TCH 55

252°
072°

SULVE

2200

2200

6 NM

3.2 NM

1.3

3000

AKEPE

*LNAV only.

*1.3 NM to RW07

RW07

072°

CATEGORY	A	B	C	D	E
LPV DA	1018/40 335 (400-¾)				
LNAV/VNAV DA	1129/50 446 (500-1)				
LNAV MDA	1140/24 457 (500-½)	1140/40 457 (500-¾)	1140/50 457 (500-1)		
CIRCLING	1200-1 517 (600-1)	1300-1¾ 617 (700-1¾)	1360-2¼ 677 (700-2¼)	1360-2½ 677 (700-2½)	

TDZ/CL Rwy 7
HIRL Rwy 7-25
MIRL Rwy 16-34
REIL Rws 16 and 34

TWR 91

10600 X 150
0.3% UP

3599 X 150
0.34

072°