

TACAN  
Chan 72

APCH CRS  
068°

Rwy ldg 10,599  
TDZE 683  
Arprt Elev 684

[USAF]EUGENE F KRANZ TOLEDO EXPRESS (KTOL)

ALSIF-2

\* When ALS inop, increase CAT E vis to 1½ mile.

MISSED APPROACH: Climb to 3000 then right turn on TOL TACAN R-170 to POWDR/15 DME and hold.

ATIS  
118.75 290.225

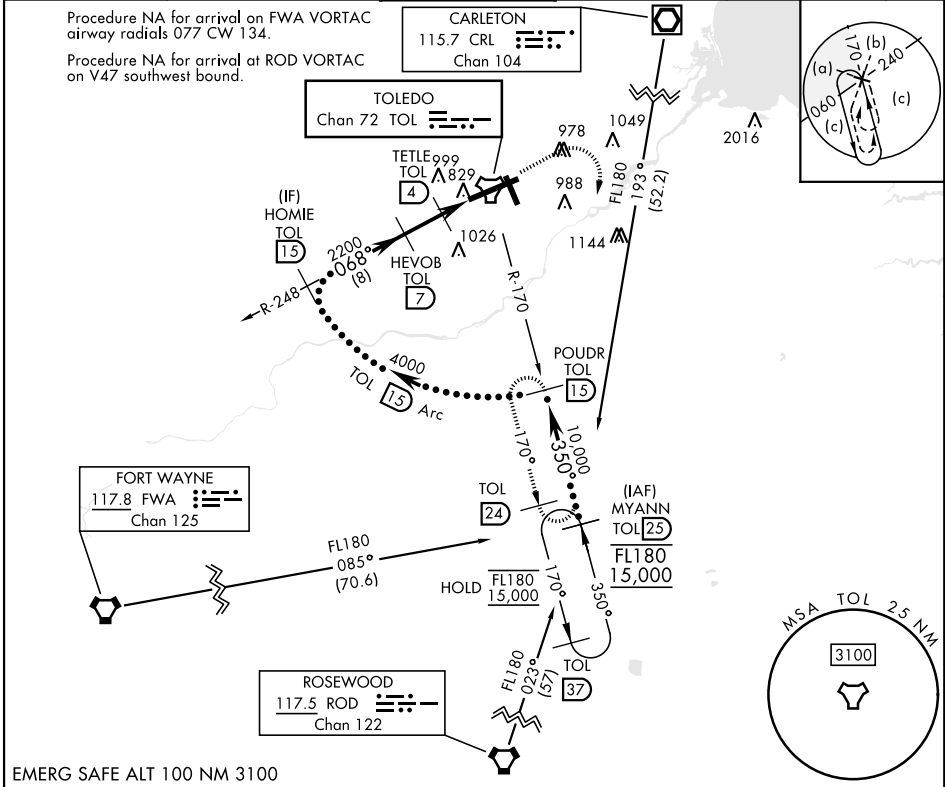
TOLEDO APP CON  
126.1 317.55

TOLEDO TOWER  
118.1 285.4

GND CON  
121.9 348.6

CLNC DEL  
121.75 348.6

ASR



3000

POUDR  
TOL  
15

ELEV 684 D TDZE 683

4000

HEVOB  
TOL  
7

TETLE  
TOL  
4

TOL  
2.9

TOL  
1.6

TOL TACAN

794 A

TWR 750

769 ± A

778

726 ± A

775 ± A

| CATEGORY | C                     | D                       | E                       |
|----------|-----------------------|-------------------------|-------------------------|
| S-7 *    | 1140/45               | 457 (500-7%)            |                         |
| CIRCLING | 1360-2<br>676 (700-2) | 1400-2¼<br>716 (800-2¼) | 1400-2½<br>716 (800-2½) |

HIRL Rwy 7-25  
MIRL Rwy 16-34  
REIL Rwy 16, 34  
TDZL/CL Rwy 7

Rwy 7 ldg 10,599'  
Rwy 25 ldg 10,599'