

TOLEDO, OHIO

HI-ILS Y or LOC Y RWY 25

LOC/DME I-BQE

LOC/DME I-BQE
108.7
Chan **24**

APCH CRS
252°

Rwy Idg	10,599
TDZE	678
Arpt Elev	684

[USAF]

EUGENE F KRANZ TOLEDO EXPRESS (KTOL)

DME required

▼ * When ALS inop, increase vis to 1½ miles.

MALSR

MISSED APPROACH: Climb to 2500 then climbing left turn to 3000 on TOL R-170 to POUDR (TOL R-170/15 DME) and hold.

ATIS	
118.75	290.225

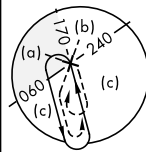
TOLEDO APP CON
126.1 317.55

TOLEDO TOWER
118.1 285.4

GND CON	
121.9	348.6

CLNC DEL
121.75 348.6

ASR




Procedure NA for arrival on FWA
VORTAC airway radials 077 CW 134.


Procedure NA for arrival at ROD
VORTAC on V47 southwest bound.

Use I-BQE DME when
on the localizer course.

TOLEDO
2 TOL =

LOCALIZER 108.7
I-BQE $\equiv \cdot \cdot \cdot$
Chap 24

FORT WAYNE
117.8 FWA 
Chan 125

ROSEWOOD
117.5 ROD 
Chan 122

MSA TOL 25 NM

EMERG SAFE ALT 100 NM 3100

2500 ↑	3000 TOL R-170 ↘	POUDR TOL 15
-----------	---------------------------	--------------------

VGSI and ILS glidepath
not coincident
(VGSI Angle 3.00/TCH 69). OTBUE
TOL 15

ELEV	684	D	TDZE	678
------	-----	----------	------	-----

684

D

TC

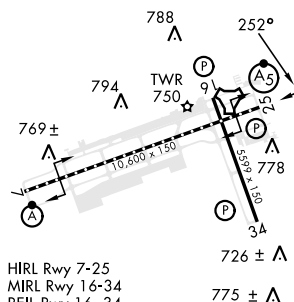
E

10

78

GS 3.00 °
TCH 52

CATEGORY	C	D	E
S-ILS 25	945/20	267	(300-½)
S-LOC 25 *	1200/55	522	(600-1)
CIRCLING	1300-1¼ 616 (700-1¼)	1360-2¼ 676 (700-2¼)	1360-2½ 676 (700-2½)



HIRL Rwy 7-25
MIRL Rwy 16-34
REIL Rwy 16, 34
TDZL/CL Rwy 7

TOLEDO, OHIO

41° 35'N-83° 48'W EUGENE F KRANZ TOLEDO EXPRESS (KTOL)

Amdt 6C 23JAN25

HI-ILS Y or LOC Y RWY 25