

LOC I-GMU

109.7

APP CRS

006°

Rwy Idg

5393

TDZE

1015

Apt Elev

1048

ILS or LOC RWY 1

GREENVILLE DOWNTOWN (GMU)

ADF required. RADAR required for procedure entry at SPRKI.

▼

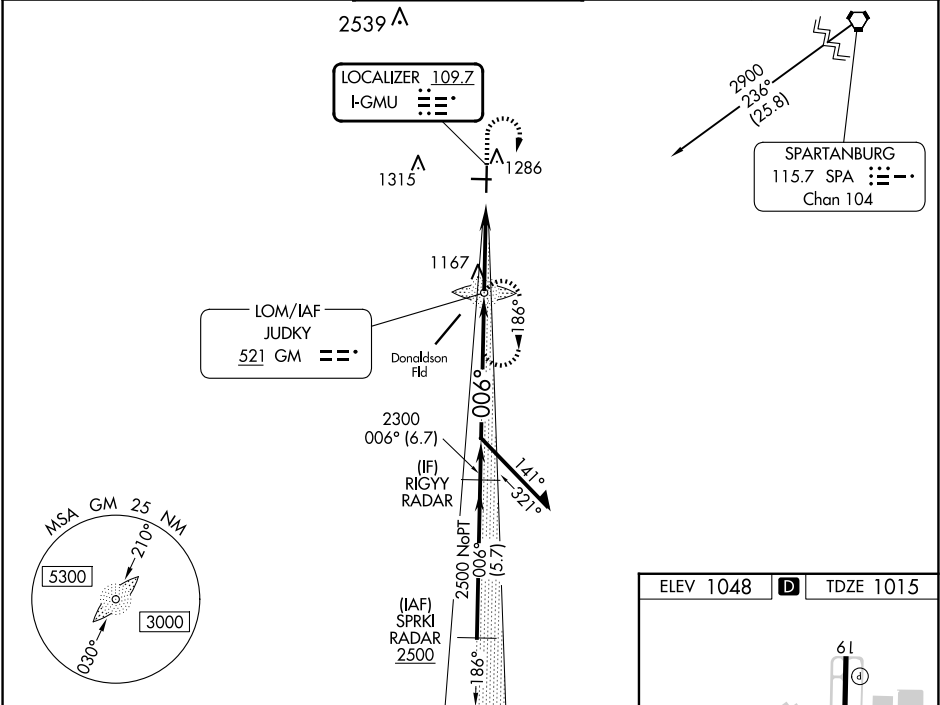
▲

Inop table does not apply to S-ILS 1 all Cats. For inop ALS, increase S-LOC 1 visibility Cats C/D to 1½ SM. When local altimeter setting not received, use Greer altimeter setting and increase DA to 1248, increase all MDAs 40 feet and Circling Cat C visibility ¼ SM. For inop ALS when using Greer altimeter setting, increase S-LOC 1 visibility Cat C/D to 1½ SM. When using Greer altimeter setting, inop table does not apply to S-ILS 1 all Cats.

MALSF

MISSED APPROACH: Climb to 1500 then climbing right turn to 2900 direct JUDKY LOM and hold, continue climb-in-hold to 2900.

ATIS 127.075	GREER APP CON★ 118.8 270.275	GREENVILLE TOWER★ 119.9 (CTAF) 0 257.7	GND CON 121.25	UNICOM 122.95
-----------------	---------------------------------	---	-------------------	------------------



Remain within 10 NM

GM LOM JUDKY

186° 2900 006° 2400 2300

GS 3.00° TCH 35

GS unusable below 1216.

3.6 NM

1500 2900 JUDKY

ELEV 1048	TDZE 1015
-----------	-----------

61 Δ

TWR 1094

4000 X 80

0.5% UP

5393 X 100

1.1% UP

006°

REIL Rwy 28

REIL Rwy 19

MIRL Rwy 10-28

HIRL Rwy 1-19

FAF to MAP 3.6 NM

Knots	60	90	120	150	180
Min:Seq	3:36	2:24	1:48	1:26	1:12