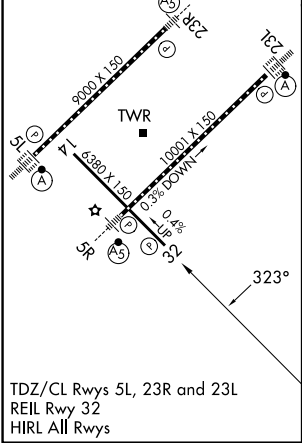
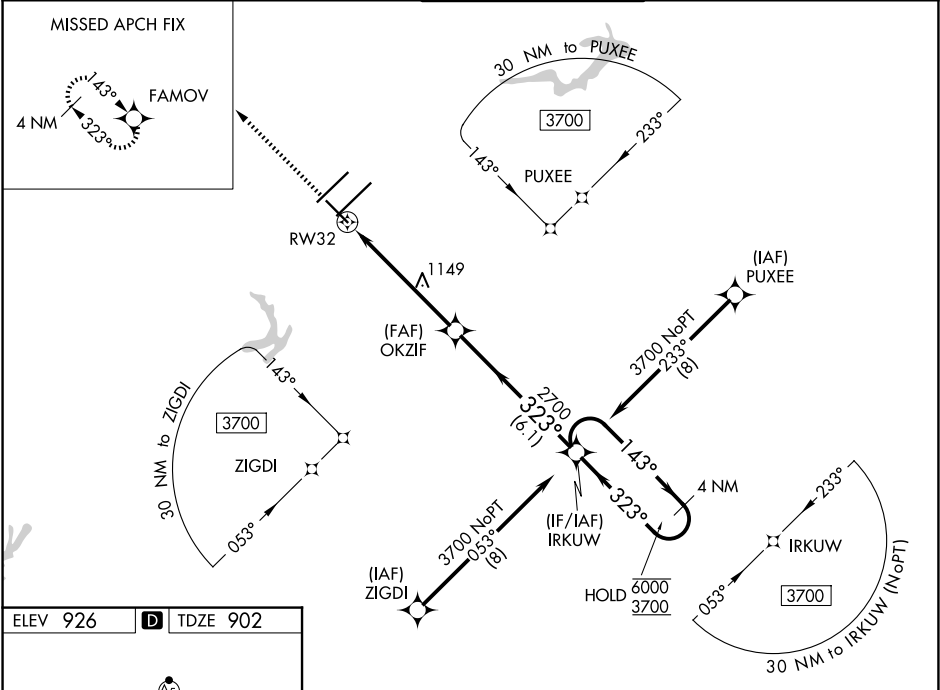


WAAS CH 61035 W32A	APP CRS 323°	Rwy Ldg 6380 TDZE 902 Apt Elev 926
----------------------------------------	------------------------	---------------------------------------------------------------

RNAV (GPS) RWY 32

PIEDMONT TRIAD INTL (GSO)

RNP APCH - GPS.		MISSED APPROACH: Climb to 4100 direct FAMOV and hold, continue climb-in-hold to 4100.		
▼ ▲ For uncompensated Baro-VNAV systems, LNAV/VNAV NA below -7°C or above 54°C. Rwy 32 helicopter visibility reduction below ¾ SM NA.				
D-ATIS 128.55	GREENSBORO APP CON 124.35 269.225 126.6 327.075 (250°-049°) (050°-249°)	GREENSBORO TOWER 119.1 290.325	GND CON 121.9 348.6	CLNC DEL 121.75



4100 FAMOV		IRKUW 4 NM Holding Pattern			
RW32		OKZIF 2700			
1.4 NM to RW32		2700			
1.4 NM		4.1 NM		6.1 NM	
1.4 NM		6.1 NM		GP 3.00° TCH 52	
CATEGORY	A	B	C	D	
LPV DA	1102-3/4		200 (200-3/4)		
LNAV/VNAV DA	1419-1 1/3		517 (500-1 1/3)		
LNAV MDA	1400-1	498 (500-1)	1400-1 1/8	498 (500-1 1/8)	
CIRCLING	1440-1	514 (600-1)	1700-2 1/4 774 (800-2 1/4)	1700-2 1/2 774 (800-2 1/2)	

SE-2, 07 AUG 2025 to 04 SEP 2025

SE-2, 07 AUG 2025 to 04 SEP 2025