

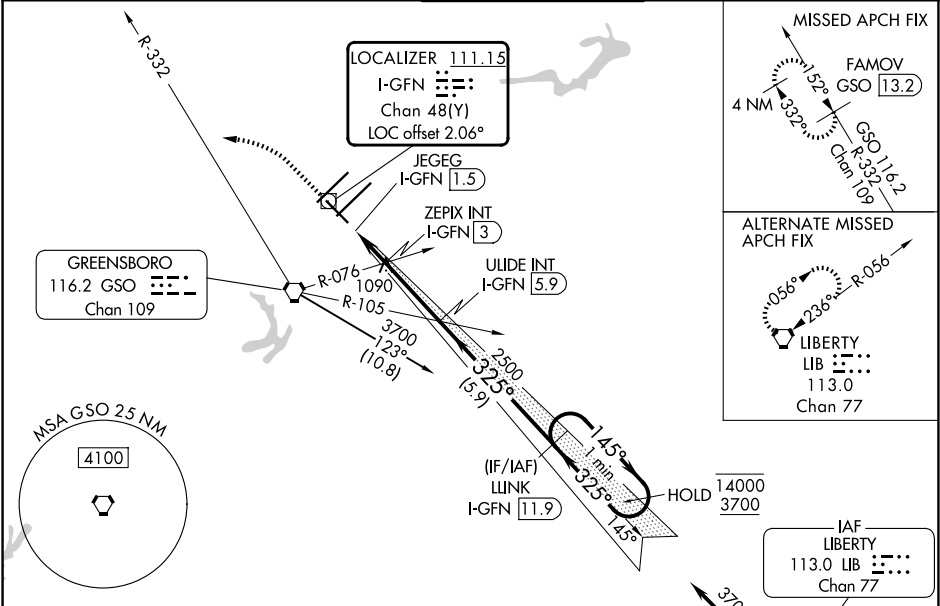
LOC/DME I-GFN 111.15 Chan 48(Y)	APP CRS 325°	Rwy Ldg TDZE 902 Apt Elev 926
--	------------------------	---

ILS Z or LOC Z RWY 32

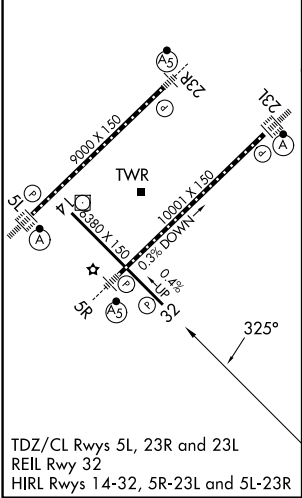
PIEDMONT TRIAD INTL (GSO)

DME required.	MISSED APPROACH: Climb to 1400 then climbing left turn to 3700 on heading 307° and GSO VORTAC R-332 to FAMOV/GSO 13.2 DME and hold.
<div><div></div><div>Rwy 32 helicopter visibility reduction below ¾ SM NA.</div></div>	

D-ATIS 128.55	GREENSBORO APP CON 124.35 269.225 (250°-049°) 126.6 327.075 (050°-249°)	GREENSBORO TOWER 119.1 290.325	GND CON 121.9 348.6	CLNC DEL 121.75
-------------------------	---	--	-------------------------------	---------------------------



ELEV 926	D	TDZE 902
----------	----------	----------



1400	3700	GSO R-332	FAMOV GSO 13.2	ULIDE INT I-GFN 5.9	WINK I-GFN 11.9	One Minute Holding Pattern
hdg 307°						
1400	3700	1600	2500	2500	1400	3700
145°	325°	325°	145°			
0.4	1 NM	0.6 NM	2.9 NM	5.9 NM		
CATEGORY	A	B	C	D		
S-ILS 32	1152-¾ 250 (300-¾)					
S-LOC 32	1400-1	498 (500-1)	1400-1¾	498 (500-1¾)		
CIRCLING	1440-1	514 (600-1)	1700-2¼ 774 (800-2¼)	1700-2½ 774 (800-2½)		