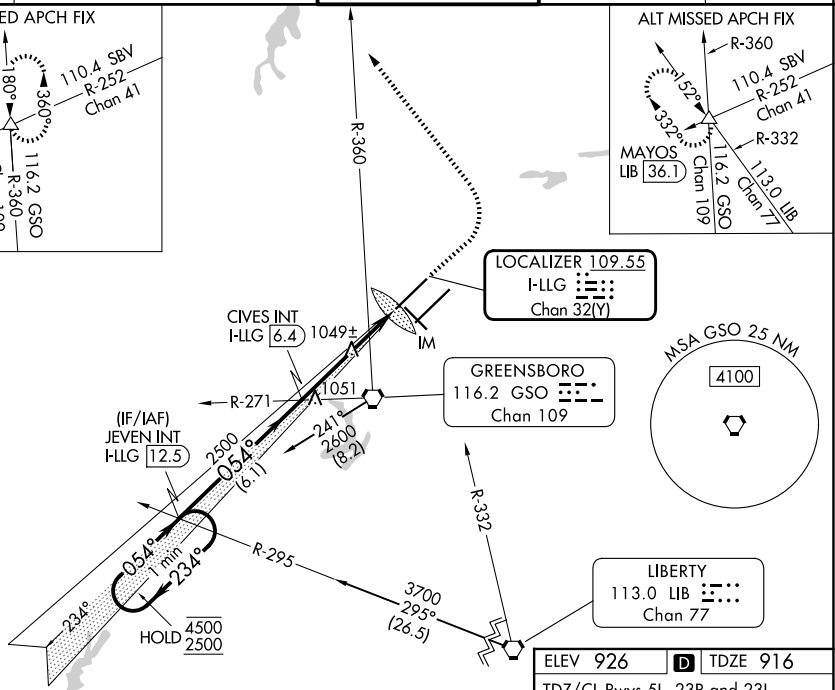


ILS or LOC RWY 5L
PIEDMONT TRIAD INTL (GSO)

MISSED APPROACH: Climb to 1400 then climbing left turn to 3100 on heading 330° and GSO VORTAC R-360 to MAYOS INT/GSO 16.9 DME and hold.




The figure consists of three panels illustrating a navigation strategy for a vessel. The left panel shows a 'MISSED APCH FIX' with a 180° turn to 360° and a 110.4 SBV turn to 116.2 GSO. The middle panel shows a 180° turn to 360° and a 110.4 SBV turn to 116.2 GSO. The right panel shows an 'ALT MISSED APCH FIX' with a 152° turn to 332° and a 110.4 SBV turn to 116.2 GSO. The diagram includes labels for MAYOS GSO, MAYOS LIB, R-252, R-332, R-360, Chan 41, Chan 109, and Chan 77.



ELEV 926 D TDZE 916

TDZ/CL Rwy 5L, 23R and 23L
 REIL Rwy 32
 HIRL Rwy 14-32, 5R-23L and 5L-23R

FAF to MAP 4.7 NM

Knots	60	90	120	150	180
Min:Sec	4:42	3:08	2:21	1:53	1:34

SE-2, 07 AUG 2025 to 04 SEP 2025