

LOC/DME	I-DB	APP CRS	Rwy Ldg TDZE	9000
109.55		234°	864	
Chan 32(Y)			Apt Elev	926

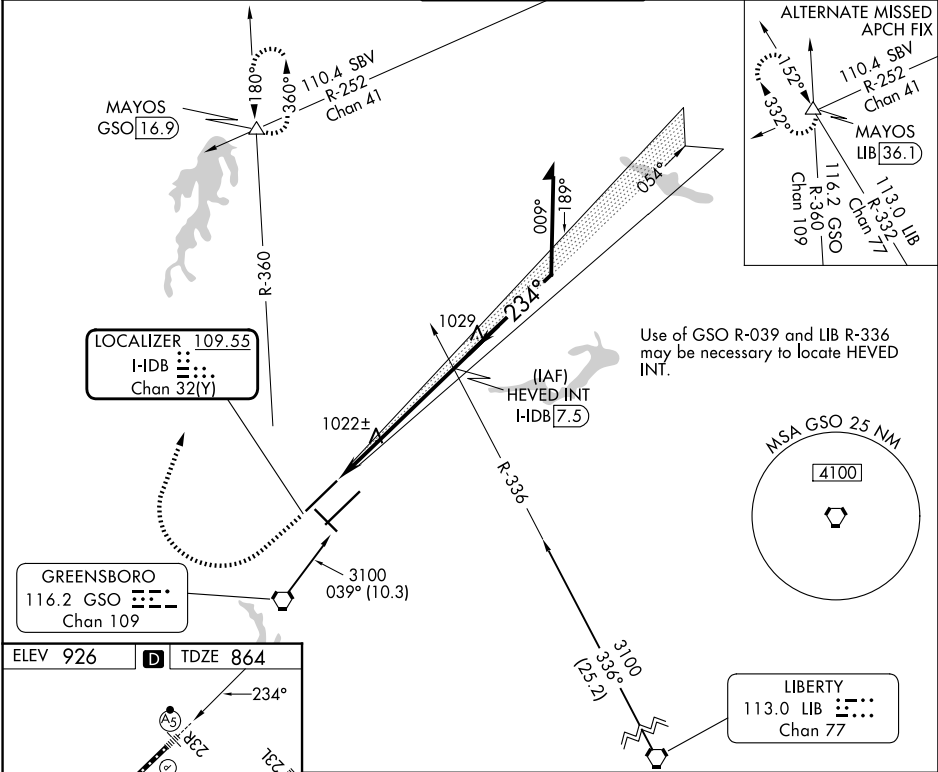
ILS or LOC RWY 23R
PIEDMONT TRIAD INTL (GSO)

Simultaneous approach authorized.

MALSR

MISSED APPROACH: Climb to 1500 then climbing right turn to 3100 on heading 015° and GSO VORTAC R-360 to MAYOS INT/GSO 16.9 DME and hold.

D-ATIS	GREENSBORO APP CON	GREENSBORO TOWER	GND CON	CLNC DEL
128.55	124.35 269.225 (250°-049°) 126.6 327.075 (050°-249°)	119.1 290.325	121.9 348.6	121.75



ELEV 926 **D** TDZE 864

TDZ/CL Rws 5L, 23R and 23L
REIL Rwy 32
HIRL Rws 14-32, 5R-23L and 5L-23R

FAF to MAP 5.8 NM

Knots	60	90	120	150	180
Min:Sec	5:48	3:52	2:54	2:19	1:56

	1500	3100	GSO R-360	MAYOS	HEVED INT I-DB 7.5	Remain within 10 NM
		hdg 015°		△		
	VGSI and ILS glidepath not coincident (VGSI Angle 3.00/TCH 72)					
			I-DB 1.7	I-DB 2.8		
						GS 3.00° TCH 55
CATEGORY	A	B	C	D		
S-ILS 23R		1064/18	200 (200-½)			
S-LOC 23R	1280/24	416 (400-½)	1280/40	416 (400-¾)		
CIRCLING	1440-1	514 (600-1)	1700-2¼ 774 (800-2¼)	1700-2½ 774 (800-2½)		