
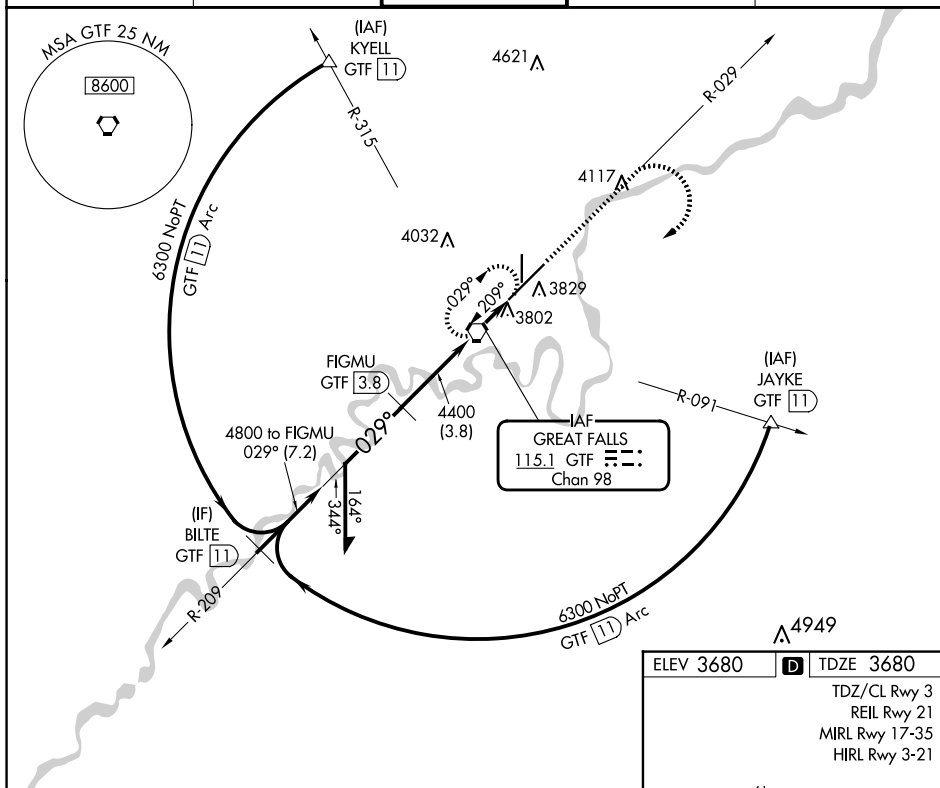


VORTAC GTF <u>115.1</u> Chan 98	APP CRS 029°	Rwy Ldg 10502 TDZE 3680 Apt Elev 3680
---	------------------------	--

VOR RWY 3
GREAT FALLS INTL (GTF)

<p>DME required.</p>	<p>ALSF-2</p>	<p>MISSED APPROACH: Climb to 5000 on GTF VORTAC R-029 then climbing right turn to 6300 direct GTF VORTAC and hold, continue climb-in-hold to 6300.</p>
<p>▼ For inoperative ALS, increase Cat C visibility to RVR 5500.</p>		

ATIS 126.6 269.0	GREAT FALLS APP CON 128.6 379.175	GREAT FALLS TOWER 118.7 282.2	GND CON 121.7 348.6	CLNC DEL 121.7 348.6
---------------------	--------------------------------------	----------------------------------	------------------------	-------------------------



VGS and descent angles not coincident
(VGS Angle 3.00/TCH 70).

Remain within 10 NM

GTF VORTAC

5000

6300

GTF R-029

GTF

6300

209°

FIGMU
GTF (3.8)

4800

029°

4400

3.73°
TCH 71

3.8 NM

0.7

1 NM

CATEGORY	A	B	C	D
S-3	4060/24 380 (400-½)			NA
C CIRCLING	4140-1	460 (500-1)	4320-1¾ 640 (700-1¾)	NA