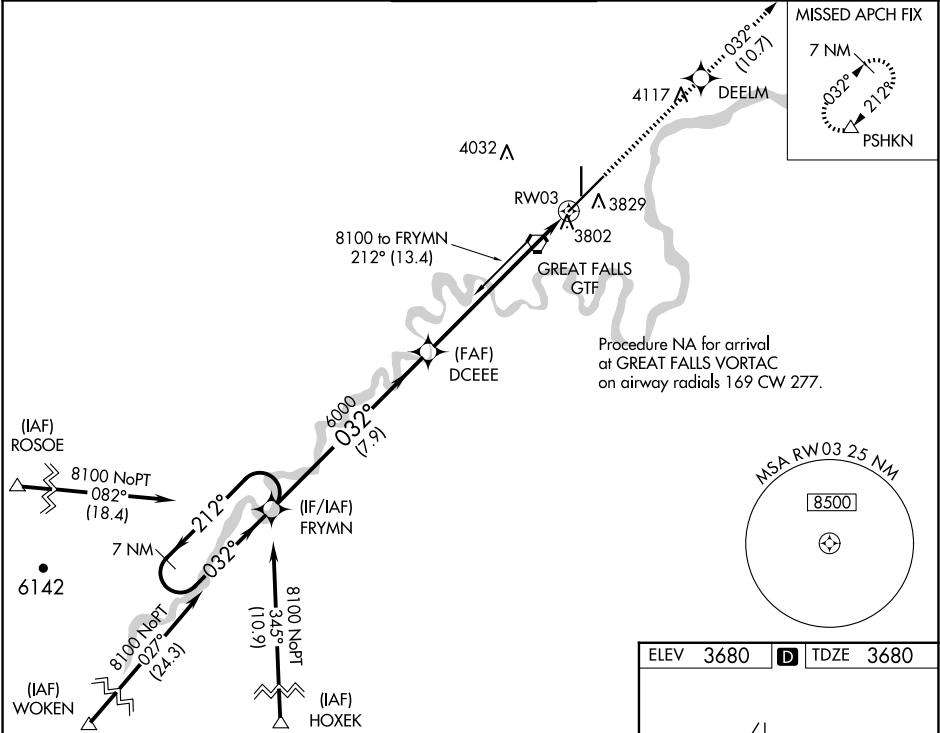


WAAS CH 70602 W03A	APP CRS 032°	Rwy Ldg 10502 TDZE 3680 Apt Elev 3680
----------------------------------------	------------------------	------------------------------------------------------------------

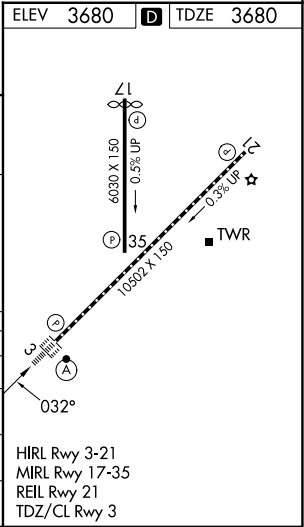
RNAV (GPS) Y RWY 3
GREAT FALLS INTL (GTF)

RNP APCH - GPS.	ALSF-2	MISSED APPROACH: Climb to 6200 direct DEELM and on track 032° to PSHKN and hold.
▼ For uncompensated Baro-VNAV systems, LNAV/VNAV NA below -25°C or above 50°C. For inop ALS, increase LNAV/VNAV all Cats visibility to RVR 4500.		

ATIS 126.6 269.0	GREAT FALLS APP CON 128.6 379.175	GREAT FALLS TOWER 118.7 282.2	GND CON 121.7 348.6	CLNC DEL 121.7 348.6
----------------------------	---------------------------------------------	-----------------------------------------	-------------------------------	--------------------------------



VGSI and RNAV glidepath not coincident (VGSI Angle 3.00/TCH 70).		6200	DEELM	tr 032°	PSHKN
7 NM Holding Pattern		FRYMN	DCEEE	*LNAV only	
8100	←212°	→032°	032°		
GP 3.00°	TCH 54				
7.9 NM		5.9 NM	1.2 NM		
CATEGORY	A	B	C	D	
LPV DA	3880/18		200 (200-½)		
LNAV/VNAV DA	3963/24		283 (300-½)		
LNAV MDA	4140/24		460 (500-½)		4140/45 460 (500-¾)
CIRCLING	4140-1 460 (500-1)		4340-1¾ 660 (700-1¾)		4420-2¼ 740 (800-2¼)



NW-1, 07 AUG 2025 to 04 SEP 2025

NW-1, 07 AUG 2025 to 04 SEP 2025