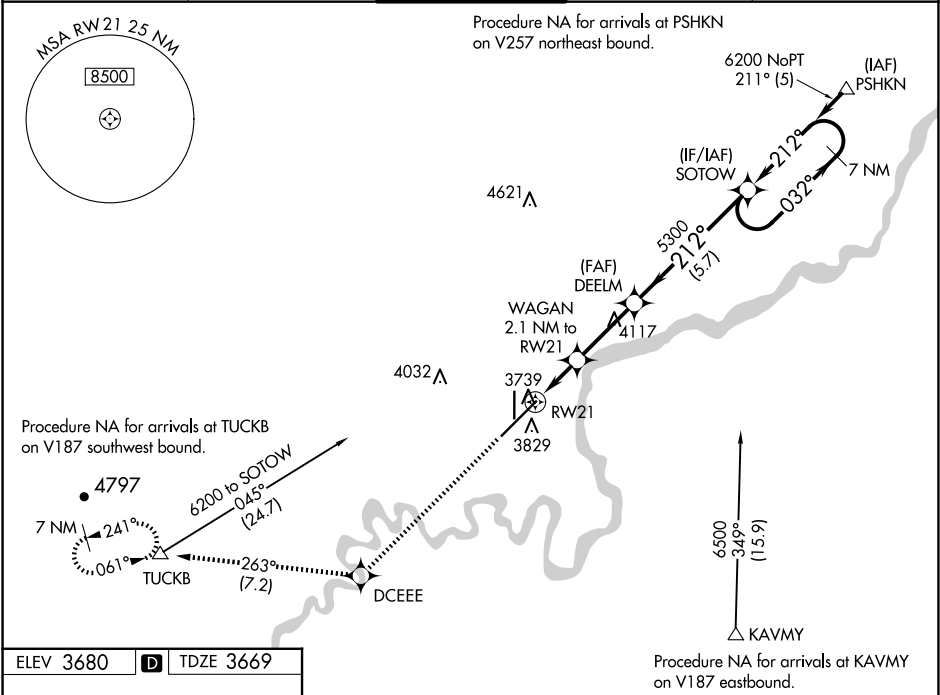


WAAS CH 90221 W21A	APP CRS 212°	Rwy Ldg TDZE 3669 Apt Elev 3680
--	------------------------	---

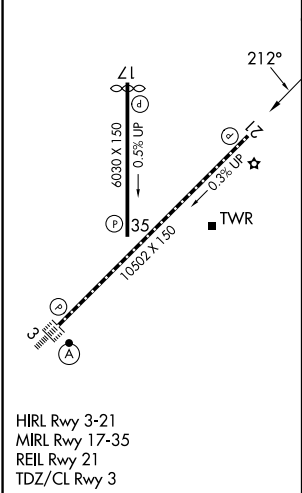
RNAV (GPS) Y RWY 21
GREAT FALLS INTL (GTF')

RNP APCH - GPS.	MISSED APPROACH: Climb to 8000 direct DCEEE and on track 263° to TUCKB and hold, continue climb-in-hold to 8000.
▼ For uncompensated Baro-VNAV systems, LNAV/VNAV NA below -24°C or above 49°C.	

ATIS 126.6 269.0	GREAT FALLS APP CON 128.6 379.175	GREAT FALLS TOWER 118.7 282.2	GND CON 121.7 348.6	CLNC DEL 121.7 348.6
----------------------------	---	---	-------------------------------	--------------------------------



ELEV 3680	D	TDZE 3669
-----------	----------	-----------



8000	DCEEE	tr 263°	TUCKB	VGSI and RNAV glidepath not coincident (VGSI Angle 3.00°/TCH 75).
				SOTOW 7 NM Holding Pattern
* LNAV only.	WAGAN 2.1 NM to RWY21	DEELM 5300		
	* 0.8 NM to RWY21			
	RWY21	4380*	5300	GP 3.00° TCH 59
	0.8	1.3 NM	2.9 NM	5.7 NM
CATEGORY	A	B	C	D
LPV DA		3869/40	200 (200-¾)	
LNAV/VNAV DA		3927/45	258 (300-¾)	
LNAV MDA	4000/55	331 (400-1)	4000/50	331 (400-1)
C CIRCLING	4140-1	460 (500-1)	4340-1¾ 660 (700-1¾)	4420-2¼ 740 (800-2¼)

NW-1, 07 AUG 2025 to 04 SEP 2025

NW-1, 07 AUG 2025 to 04 SEP 2025