

APP CRS  
**212°**

Rwy Ldg  
**10502**

TDZE  
**3669**

Apt Elev  
**3680**

RNAV (RNP) Z RWY 21

GREAT FALLS INTL (GTF')

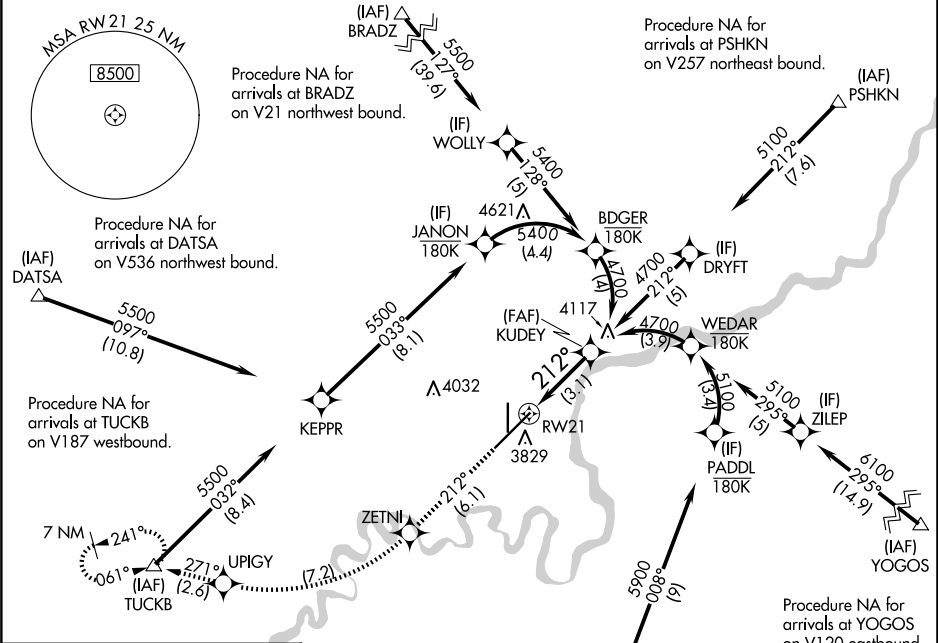
RNP AR APCH - GPS.

▼

For uncompensated Baro-VNAV systems, procedure NA below -24°C or above 54°C.

MISSED APPROACH: Climb to 8000 on track 212° to ZETNI, right turn to UPIGY and on track 271° to TUCKB and hold, continue climb-in-hold to 8000.

ATIS <b>126.6 269.0</b>	GREAT FALLS APP CON <b>128.6 379.175</b>	GREAT FALLS TOWER <b>118.7 282.2</b>	GND CON <b>121.7 348.6</b>	CLNC DEL <b>121.7 348.6</b>
----------------------------	---	---	-------------------------------	--------------------------------



ELEV 3680

D

TDZE 3669

TDZ/CL Rwy 3

REIL Rwy 21

HIRL Rwy 3-21

MIRL Rwy 17-35

Procedure NA for arrivals at URELE on V536 southbound.

Procedure NA for arrivals at ZETNI, right turn to UPIGY and on track 271° to TUCKB and hold, continue climb-in-hold to 8000.

8000

ZETNI

UPIGY

TUCKB

KUDEY

VGSI and RNAV glidepath not coincident (VGSI Angle 3.00/TCH 75).

RW21

See planview for multiple IF locations.

3.1 NM

GP 3.00°

TCH 59

CATEGORY	A	B	C	D
RNP 0.10 DA	3942/45	273 (300-7%)		
RNP 0.30 DA	3992/50	323 (400-1)		

AUTHORIZATION REQUIRED