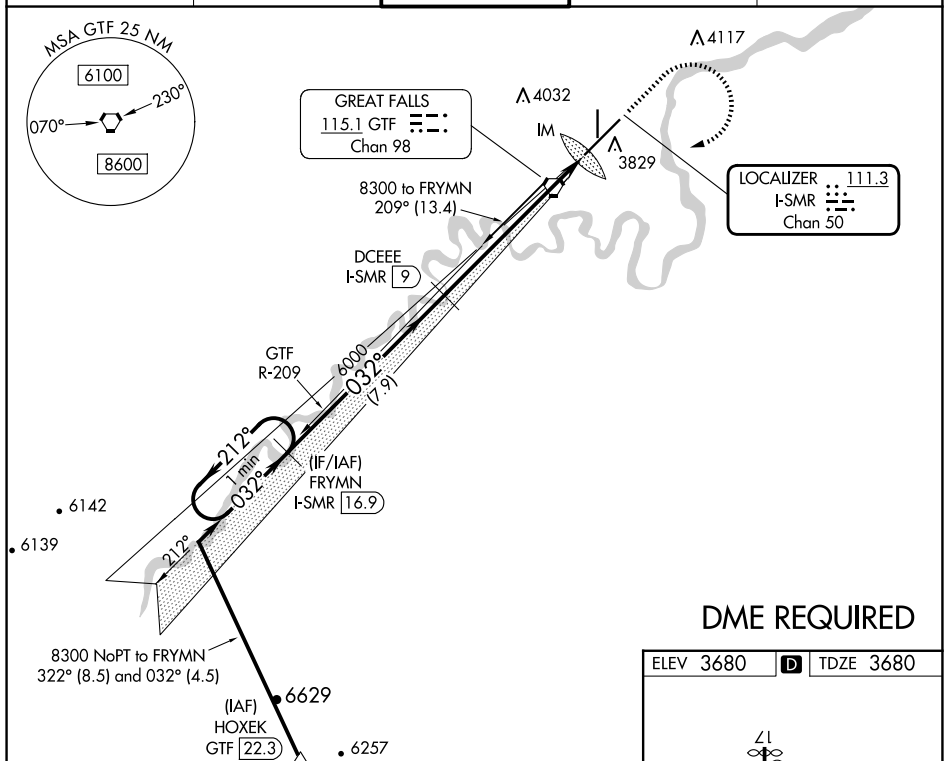


LOC/DME I-SMR <b>111.3</b> Chan <b>50</b>	APP CRS <b>032°</b>	Rwy Ldg <b>10502</b> TDZE <b>3680</b> Apt Elev <b>3680</b>
---	------------------------	--

ILS or LOC RWY 3  
GREAT FALLS INTL (GTF)

<div><div><div></div><div></div></div></div> DME required.		<div><div><div></div><div></div></div></div> ALSIF-2	MISSED APPROACH: Climb to 5000 then climbing right turn to 8300 direct GTF VORTAC then on GTF VORTAC R-209 to FRYMN/I-SMR 16.9 DME and hold.		
ATIS 126.6 269.0		GREAT FALLS APP CON 128.6 379.175	GREAT FALLS TOWER 118.7 282.2	GND CON 121.7 348.6	CLNC DEL 121.7 348.6



## DME REQUIRED

ELEV 3680

TDZE 3680

Diagram illustrating the TDZ/CL Rwy 3 approach. The diagram shows a vertical line representing the TDZ/CL and a diagonal line representing the Rwy 3 approach. The TDZ/CL is labeled "6030 X 1.50" and "0.5% UP". The Rwy 3 approach is labeled "10392 X 1.50" and "0.5% UP". A star symbol is located on the Rwy 3 approach. A "TWR" (Tower) symbol is shown. The diagram also includes a "032°" heading and a "35" speed limit.

TDZ/CL Rwy 3  
 REIL Rwy 21  
 HIRL Rwy 3-21  
 MIRL Rwy 17-35

VGSJ and ILS glidepath not coincident (VGSJ Angle 3.00/TCH 70).

One Minute Holding Pattern

FRYMNM I-SMR 16.9

DCEEE I-SMR 9

Use I-SMR DME when on the localizer course.

8300 ← 212°  
032° →

032°

6000

\*I-SMR 3.2

I-SMR 1.9

IM

GS 3.00° TCH 54

7.9 NM

5.9 NM

1.1

0.1

CATEGORY	A	B	C	D
S-ILS 3		3880/18	200 (200-½)	
S-LOC 3	4140/24	460 (500-½)	4140/45	460 (500-¾)
<b>C</b> CIRCLING	4140-1	460 (500-1)	4340-1¾ 660 (700-1¾)	4420-2¼ 740 (800-2¼)