

LOC/DME I-SMR  
**111.3**  
Chan **50**

APP CRS  
**032°**

Rwy Ldg  
TDZE **3680**  
Apt Elev **3680**

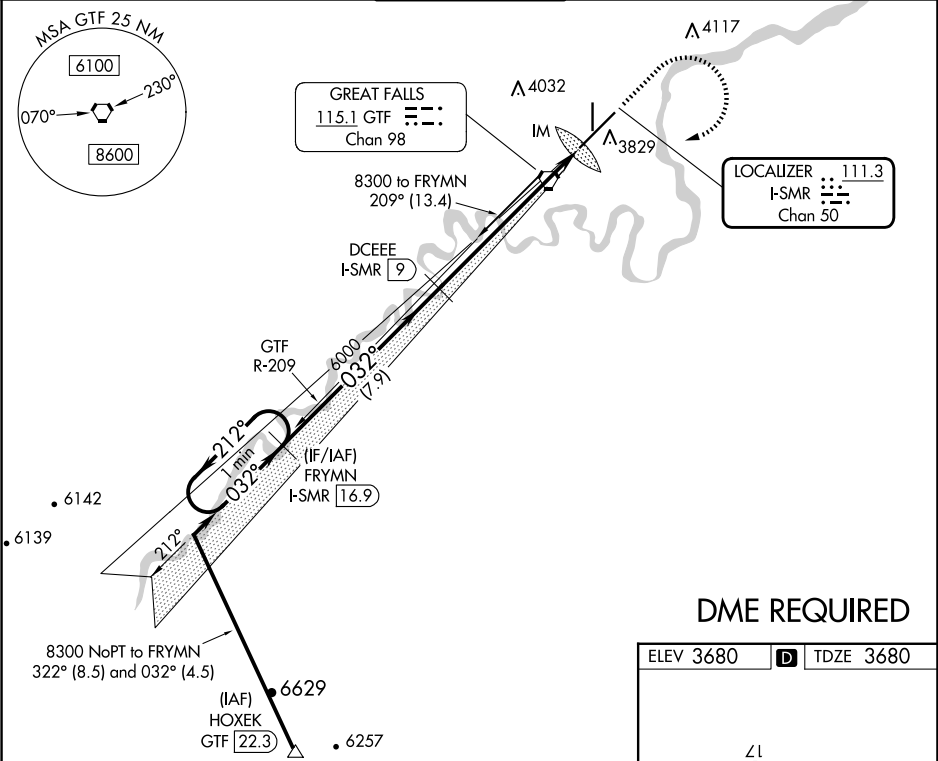
**ILS RWY 3 (SA CAT I)**  
GREAT FALLS INTL (GTF)

Requires specific OPSPEC, MSPEC, or LOA approval and use of HUD to DH. DME required.

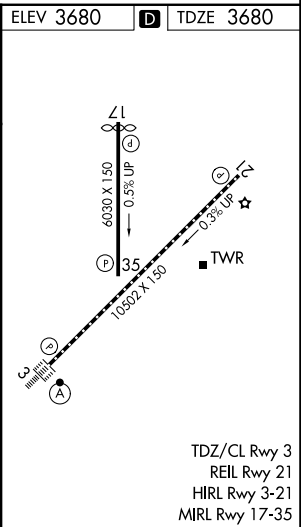
ALSF-2

MISSED APPROACH: Climb to 5000 then climbing right turn to 8300 direct GTF VORTAC then on GTF VORTAC R-209 to FRYMNI/I-SMR 16.9 DME and hold.

ATIS <b>126.6 269.0</b>	GREAT FALLS APP CON <b>128.6 379.175</b>	GREAT FALLS TOWER <b>118.7 282.2</b>	GND CON <b>121.7 348.6</b>	CLNC DEL <b>121.7 348.6</b>
----------------------------	---	---	-------------------------------	--------------------------------



DME REQUIRED



VGSI and ILS glidepath not coincident (VGSI Angle 3.00/TCH 70).  
One Minute Holding Pattern  
FRYMNI  
I-SMR 16.9

5000  
8300  
GTF  
GTF R-209  
FRYMNI  
I-SMR 16.9

DCEEE  
I-SMR 9

Use I-SMR DME when on the localizer course.

8300  
←212°  
032°→  
032°  
GS 3.00°  
TCH 54

6000  
6000  
IM

7.9 NM  
7.1 NM  
1099'

CATEGORY	A	B	C	D
5-ILS 3	RA 140/14 150 DA 3830			

**SA CATEGORY I ILS-SPECIAL AIRCREW & AIRCRAFT CERTIFICATION REQUIRED**