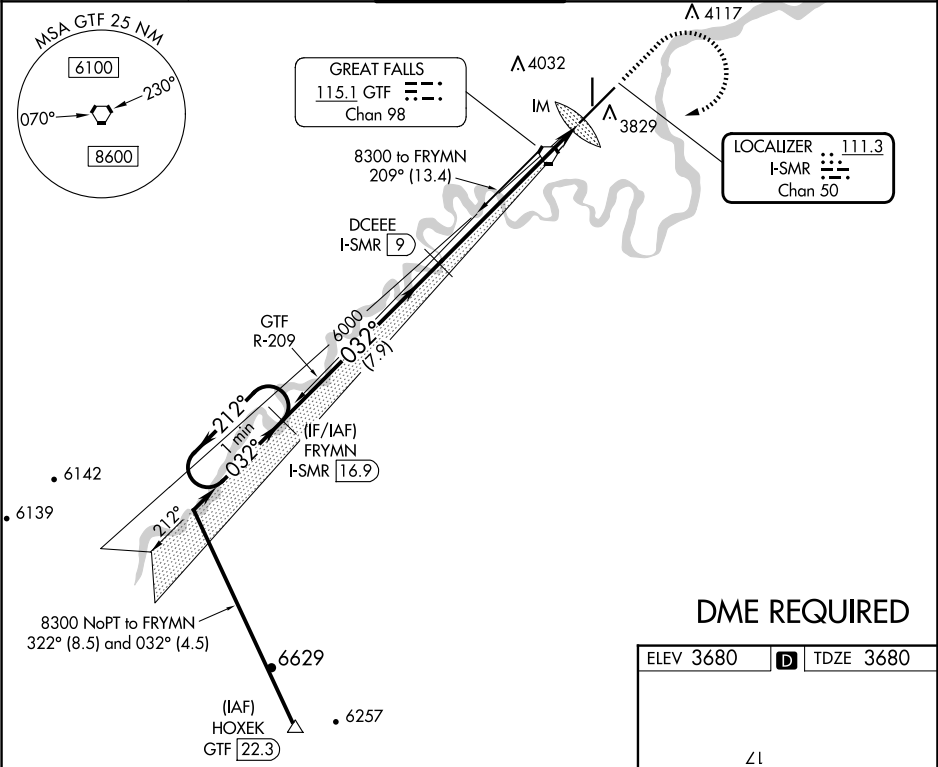


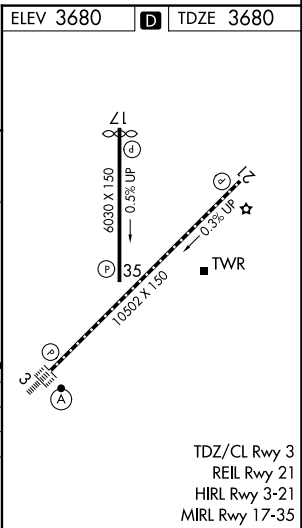
LOC/DME I-SMR 111.3 Chan 50	APP CRS 032°	Rwy Ldg 10502 TDZE 3680 Apt Elev 3680	ILS RWY 3 (CAT II & III) GREAT FALLS INTL (GTF)
---	------------------------	--	--

<div><div></div><div></div></div> <div>CAT II: RVR 1000 authorized with specific OPSPEC, MSPEC, or LOA approval and use of autoland or HUD to touchdown. DME required.</div>	ALSf-2	MISSED APPROACH: Climb to 5000 then climbing right turn to 8300 direct GTF VORTAC then on GTF VORTAC R-209 to FRYMN/I-SMR 16.9 DME and hold.
--	--------	--

ATIS 126.6 269.0	GREAT FALLS APP CON 128.6 379.175	GREAT FALLS TOWER 118.7 282.2	GND CON 121.7 348.6	CLNC DEL 121.7 348.6
----------------------------	---	---	-------------------------------	--------------------------------



DME REQUIRED



VGSI and ILS glidepath not coincident (VGSI Angle 3.00/TCH 70).		5000 ↑	8300 ↗	GTF 	GTF R-209	FRYMN I-SMR 16.9
One Minute Holding Pattern		FRYMN I-SMR 16.9		Use I-SMR DME when on the localizer course.		
8300 ← 212° 032° →		DCEEE I-SMR 9		IM 3780		
GS 3.00° TCH 54		6000		7.9 NM		
		6000		7.1 NM		
				1099'		
CATEGORY	A	B	C	D		
S-ILS 3	CAT II RA 96/12 100 DA 3780					
S-ILS 3	CAT III RVR 06					
CATEGORY II & III ILS - SPECIAL AIRCREW & AIRCRAFT CERTIFICATION REQUIRED						