


WAAS CH 65710 W35A	APP CRS 352°	Rwy Idg 7852 TDZE 1883 Apt Elev 1887
--	------------------------	---

RNAV (GPS) RWY 35

GREAT BEND MUNI (GBD)

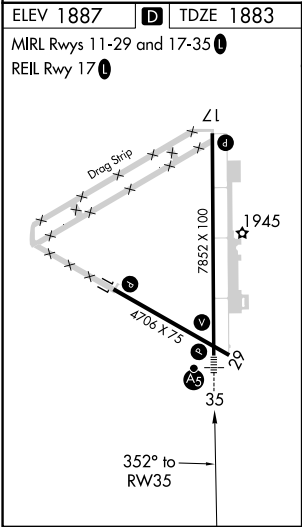
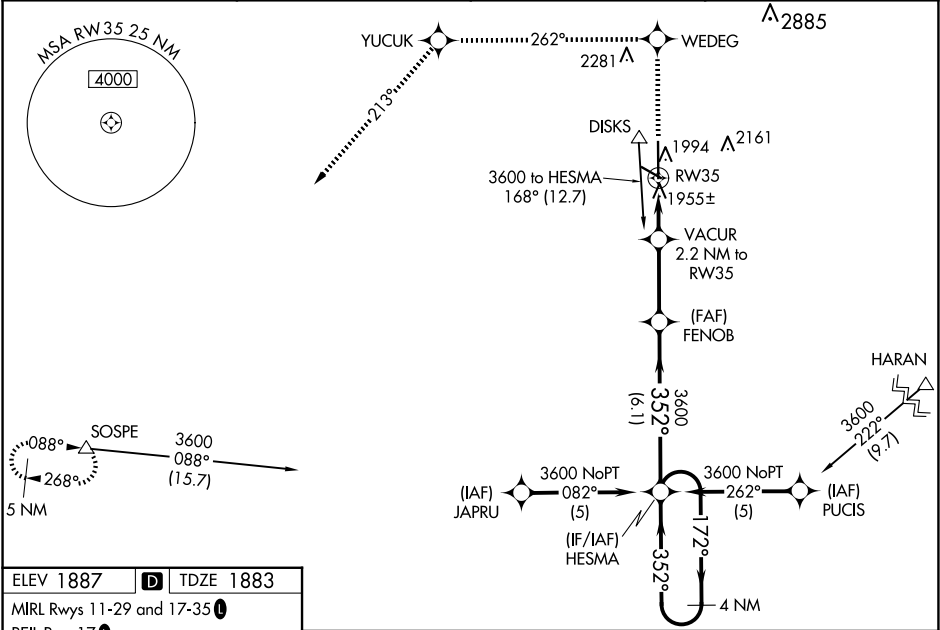
⚠ For uncompensated Baro-VNAV systems, LNAV/VNAV NA below -18°C (0°F) or above 54°C (130°F). DME/DME RNP-0.3 NA. When local altimeter setting not received, use Russell Muni altimeter setting: increase LPV DA to 2248 feet and all visibilities ¼ SM; increase LNAV/VNAV DA to 2299 feet and all visibilities ¼ SM; increase all MDAs 80 feet and visibility Cats C and D ¼ SM. For inop MALSR increase LPV all Cats visibility to 1 mile. For inop MALSR when using Russell Muni altimeter setting increase LPV all Cats and LNAV Cat D visibility to 1¼ mile. Baro-VNAV and VDP NA when using Russell Muni altimeter setting. Inop table does not apply to LNAV Cat D.

MALSR



MISSED APPROACH: Climb to 4500 direct WEDEG and via 262° track to YUCUK then via 213° track to SOSPE and hold.

AWOS-3PT 119.275	KANSAS CITY CENTER 118.8 322.425	UNICOM 122.8 (CTAF) 1
----------------------------	--	---------------------------------



4500	WEDEG	262° tr	YUCUK	213° tr	SOSPE
*LNAV only					
VACUR 2.2 NM to RW35					
*0.9 NM to RW35					
FENOB					
HESMA					
4 NM Holding Pattern					
172° 3600					
GP 3.00° TCH 49					
CATEGORY	A	B	C	D	
LPV DA	2171-½	288	300-½		
LNAV/VNAV DA	2222-¾	339	400-¾		
LNAV MDA	2220-½	337	400-½	2220-1	337 (400-1)
CIRCLING	2320-1	2340-1	2520-1¾	2640-2½	753 (800-2½)
	433 (500-1)	453 (500-1)	633 (700-1¾)		