

WAAS CH 86799 W35A	APP CRS 353°	Rwy Idg TDZE 1847 Apt Elev 1847	7002
--	------------------------	---	-------------

RNAV (GPS) RWY 35

CENTRAL NEBRASKA RGNL (GRI)

RNP APCH - GPS.

▼

For uncompensated Baro-VNAV systems, LNAV/VNAV NA below -21°C or above 54°C.

▲

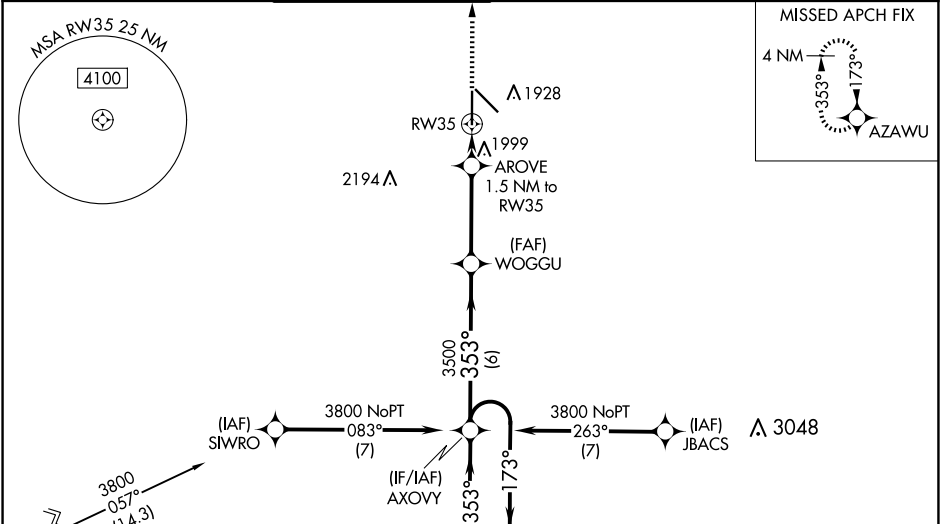
Baro-VNAV NA when using Aurora altimeter setting. Circling Rwy 13 and 17 NA at night.

For inop ALS, increase LNAV Cats C/D visibility to RVR 6000. When local altimeter setting not received, use Aurora altimeter setting and increase LPV DA to 2088 feet; increase LNAV/VNAV DA to 2328 feet and all visibilities to RVR 5000; increase all MDAs 60 feet and LNAV visibility Cats C/D to RVR 5000 and Circling visibility Cats C/D ¼ SM. For inop ALS when using Aurora altimeter setting, increase LNAV/VNAV all Cats visibility to 1 ¾ SM, increase LNAV Cats C/D visibility to 1 ¾ SM.

MALSR

MISSED APPROACH:
Climb to 3500 direct
AZAWU and hold.

ATIS 127.4	MINNEAPOLIS CENTER 119.4 278.8	GRAND ISLAND TOWER★ 118.2 (CTAF) 0 259.3	GND CON 121.9 259.3	CLNC DEL 121.9	CLNC DEL 126.05 (when twr closed)	UNICOM 122.95
----------------------	--	--	-------------------------------	--------------------------	--	-------------------------



ELEV 1847

TDZE 1847

GP 3.00°
TCH 55

4 NM Holding Pattern

6000
3800

173°
353°

AXOVY

WOGGU

3500

3500

3500

2380

6 NM

3.5 NM

1.5 NM

3500

AZAWU

CATEGORY	A	B	C	D
LPV DA	2047/24 200 (200-½)			
LNAV/VNAV DA	2287/40 440 (500-¾)			
LNAV MDA	2260/24 413 (500-½)	2260/40 413 (500-¾)		
CIRCLING	2300-1 453 (500-1)	2400-1½ 553 (600-1½)	2560-2¼ 713 (800-2¼)	

TWR 1908

6608 X 100

35

353°

MIRL Rwy 13-31

HIRL Rwy 17-35

REIL Rwy 31