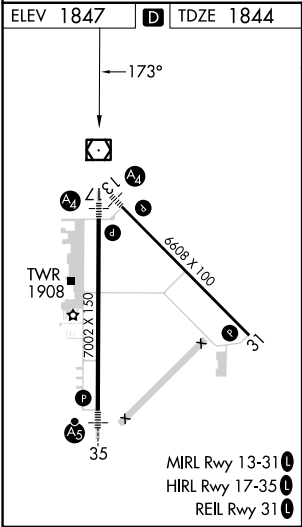
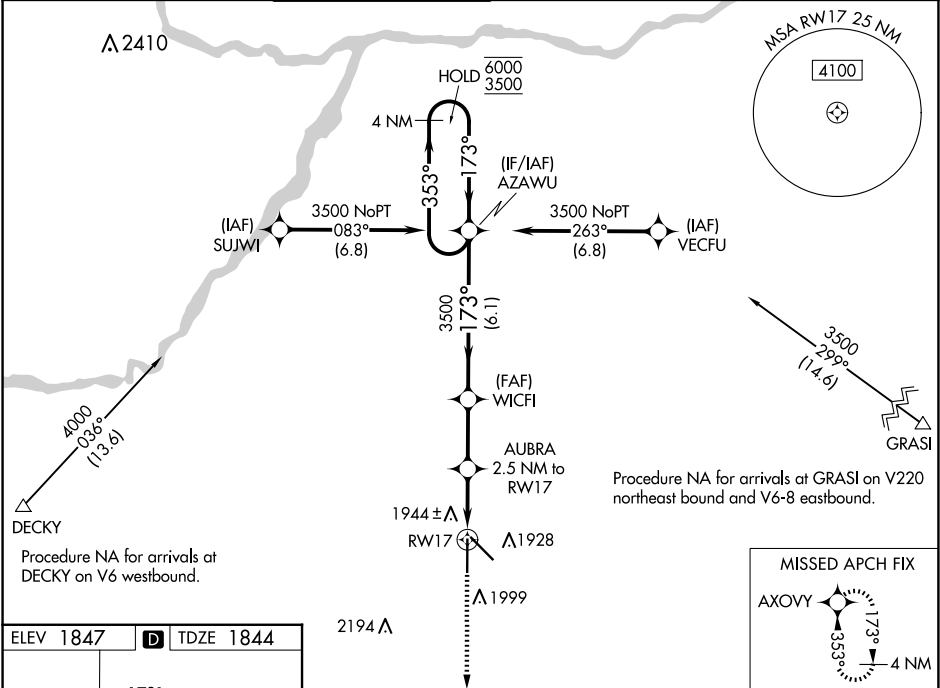


WAAS CH <b>60999</b> <b>W17A</b>	APP CRS <b>173°</b>	Rwy Idg TDZE <b>1844</b> Apt Elev <b>1847</b>	<b>7002</b>
--	------------------------	---	-------------

RNAV (GPS) RWY 17  
CENTRAL NEBRASKA RGNL (GRI)

RNP APCH - GPS.		MAL S A4		MISSED APPROACH: Climb to 3800 direct AXOVY and hold.		
ATIS <b>127.4</b>	MINNEAPOLIS CENTER <b>119.4 278.8</b>	GRAND ISLAND TOWER ★ <b>118.2 (CTAF) 0 259.3</b>	GND CON <b>121.9 259.3</b>	CLNC DEL <b>121.9</b>	CLNC DEL <b>126.05</b> (when twr closed)	UNICOM <b>122.95</b>



ELEV 1847 D TDZE 1844		3800 AXOVY		VGSI and RNAV glidepath not coincident (VGSI Angle 3.00/TCH 38).	
173°		WICFI		AZAWU	
1 NM to RW17		AUBRA 2.5 NM to RW17		3500	
1 NM		1.5 NM		2.5 NM	
1 NM		1.5 NM		6.1 NM	
CATEGORY	A	B	C	D	
LPV DA	2044-¾ 200 (200-¾)				
LNAV/VNAV DA	2125-¾ 281 (300-¾)				
LNAV MDA	2200-¾ 356 (400-¾)				
CIRCLING	2300-1	453 (500-1)	2400-1½ 553 (600-1½)	2560-2¼ 713 (800-2¼)	