
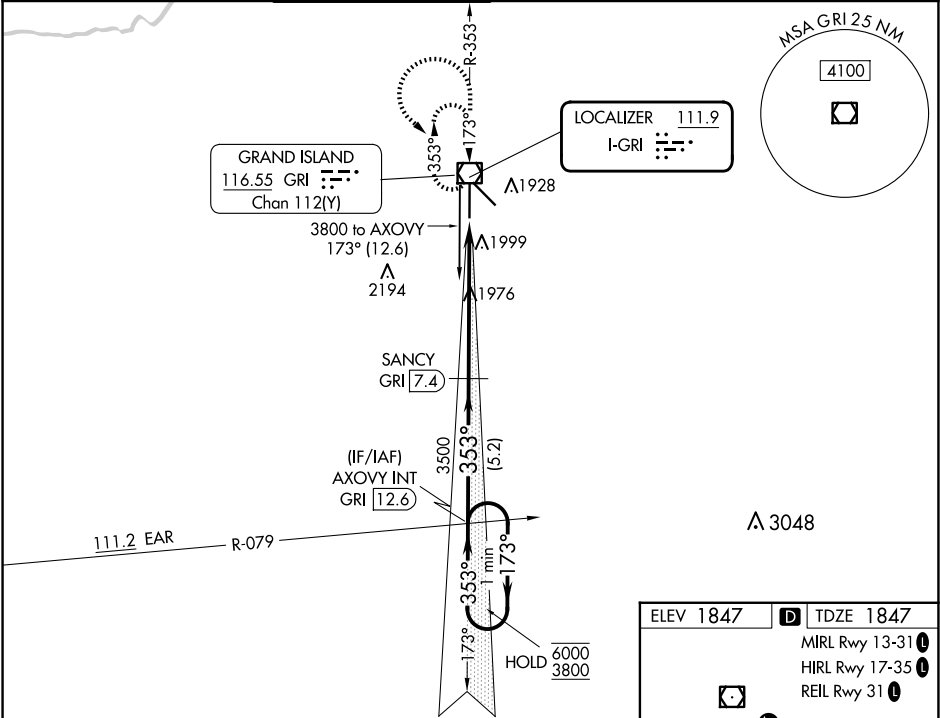


LOC I-GRI	APP CRS	Rwy Idg	7002
111.9	353°	TDZE	1847
		Apt Elev	1847

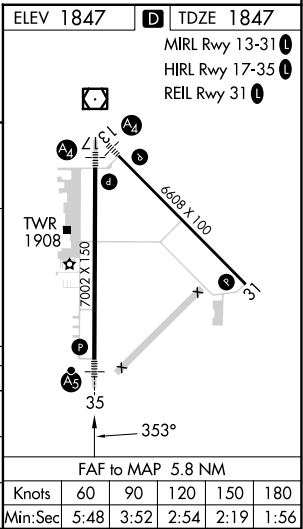
ILS or LOC RWY 35

CENTRAL NEBRASKA RGNL (GRI)

DME required for LOC only.				<div>MALSR</div> <div></div>	MISSED APPROACH: Climb to 3600 then climbing left turn to 3800 direct GRI VOR/DME and hold, continue climb-in-hold to 3800.	
<div><div><div>▼</div><div>▲</div></div><div>For inop ALS, increase S-LOC 35 Cat C/D visibility to RVR 6000. DME from GRI VOR/DME, DME use requires simultaneous reception of I-GRI and GRI DME. *RVR 1800 authorized with use of FD or AP or HUD to DA. (NA when using Aurora altimeter setting).</div></div>						
ATIS	MINNEAPOLIS CENTER	GRAND ISLAND TOWER*	GND CON	CLNC DEL	CLNC DEL	UNICOM
127.4	119.4 278.8	118.2 (CTAF) 259.3	121.9 259.3	121.9	126.05 (when twr closed)	122.95



One Minute Holding Pattern		AXOVOY INT GRI 12.6	SANCY GRI 7.4	3600 ↑	3800 ↷	GRI 
6000 ← 173°	3800 → 353°		3500			
GS 2.60° TCH 54			3500			
		5.2 NM	4.6 NM	1.2 NM		
CATEGORY	A	B	C	D		
S-ILS 35*	2047/24 200 (200-½)					
S-LOC 35	2240/24 393 (400-½)		2240/35 393 (400-¾)			
CIRCLING	2300-1 453 (500-1)		2400-1½ 553 (600-1½)	2560-2¼ 713 (800-2¼)		



NC-2, 07 AUG 2025 to 04 SEP 2025

NC-2, 07 AUG 2025 to 04 SEP 2025