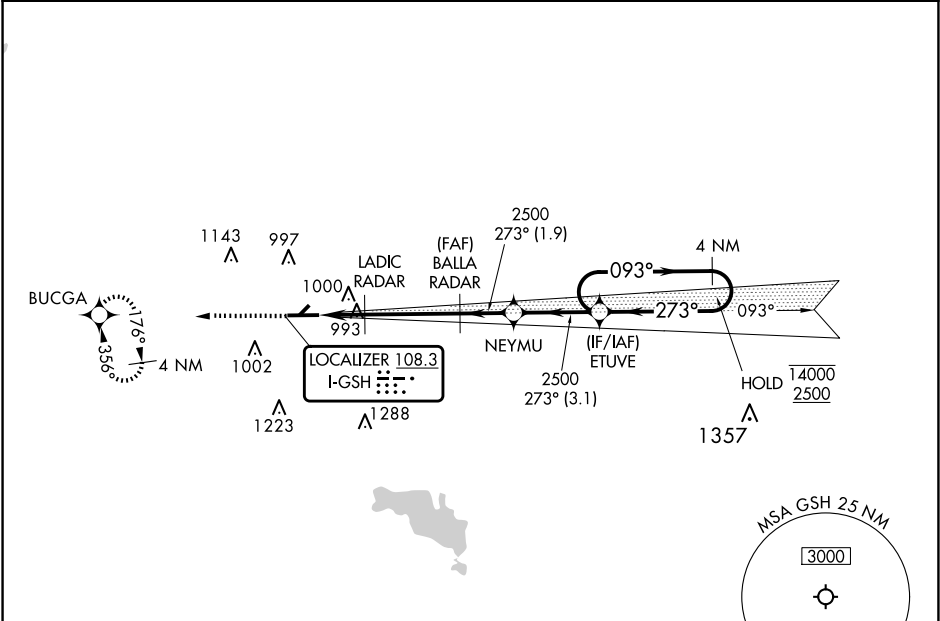


LOC I-GSH 108.3	APP CRS 273°	Rwy Ldg TDZE Apt Elev	6050 826 826
---------------------------	------------------------	-----------------------------	---

ILS or LOC RWY 27

GOSHEN MUNI (GSH)

RNP APCH - GPS.				MISSED APPROACH: Climb to 2500 direct BUGCA and hold.
RADAR required to define BALLA and LADIC.				
Circling NA to Rwy 5 and 23. Rwy 27 helicopter visibility reduction below ¾ SM NA. When local altimeter setting not received, use ASW altimeter setting: increase DA to 1251 feet and all visibilities ½ SM; increase all MDAs 40 feet; increase Cat D Circling visibility ¼ SM.				
ASOS 121.45	SOUTH BEND APP CON ★ 132.05 257.8		CLNC DEL 125.25	UNICOM 123.05 (CTAF) 0



ELEV 826	TDZE 826
----------	----------

