

GOLDSBORO, NORTH CAROLINA

TACAN Y RWY 26

TACAN GSB	APCH CRS	Rwy ldg
Chan 112	261°	11,760
	TDZE	109
	Arprt Elev	109

[USAF]

SEYMOUR JOHNSON AFB (KGSB)

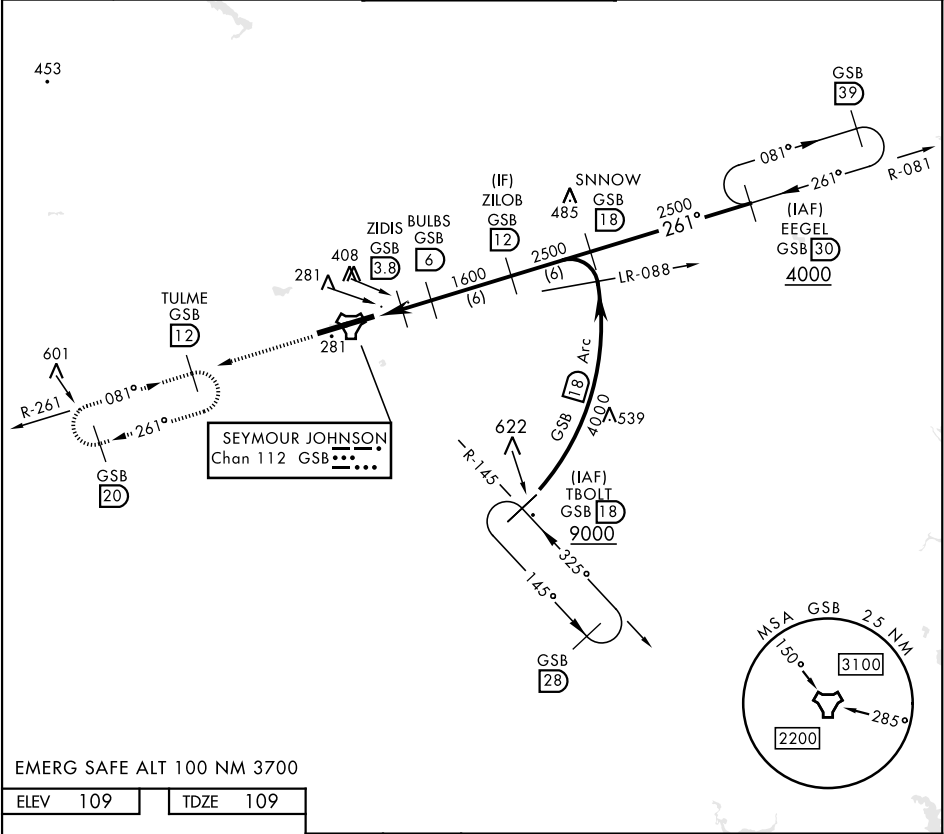
▼ * When ALS inop, increase CAT AB RVR to 55, vis to 1 mile, CAT CDE vis to 1¼ miles.
** Circling N of Rwy 8-26 not authorized.

ALSF-1



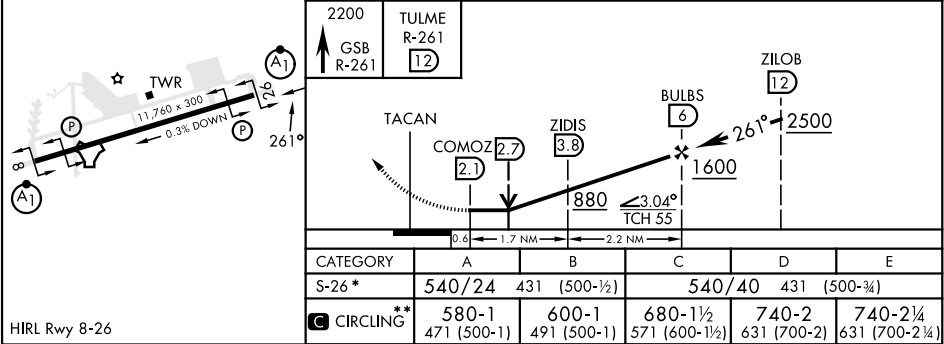
MISSED APPROACH: Climb to 2200 via GSB R-261 to TULME and hold.

ATIS ★	APP CON	TOWER ★	GND CON	CLNC DEL
317.625	123.7 290.9 (258°-110°) 119.7 273.6 (111°-257°)	126.25 370.875	132.45 275.8	128.025 270.8



EMERG SAFE ALT 100 NM 3700

ELEV	109	TDZE	109
------	-----	------	-----



GOLDSBORO, NORTH CAROLINA

35° 20'N-77° 58'W

SEYMOUR JOHNSON AFB (KGSB)

Amtd 8 03NOV22

TACAN Y RWY 26

SE-2, 07 AUG 2025 to 04 SEP 2025

SE-2, 07 AUG 2025 to 04 SEP 2025